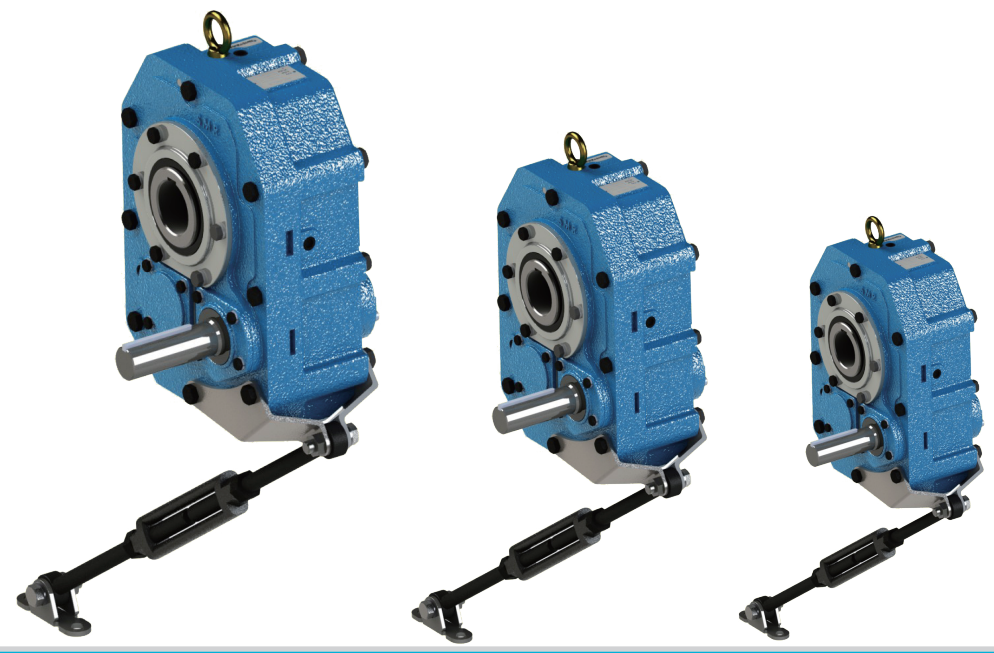




METRIC **SMR**
SHAFT MOUNT GEAR REDUCERS
SERIES



SHAFT MOUNT GEAR REDUCERS
SERIES SMR

MAX / Input Horsepower

(Unit) HP

OUTPUT RPM	2	3	4	5	6	7	8	9	OUTPUT RPM
4	0.57	0.95	1.47	2.29	3.60	5.87	9.59	14.16	4
6	0.82	1.34	2.12	3.28	5.16	8.43	13.76	20.29	6
8	1.08	1.67	2.73	4.25	6.66	10.88	17.76	26.22	8
10	1.31	2.02	3.33	5.16	8.13	13.26	21.66	31.63	10
12	1.56	2.34	3.96	5.97	9.67	15.78	25.77	36.68	12
14	1.82	2.64	4.62	6.78	11.28	18.42	29.96	41.59	14
16	2.08	2.95	5.29	7.55	12.89	20.58	33.40	46.37	16
18	2.33	3.24	5.86	8.31	14.50	22.66	36.76	51.05	18
20	2.55	3.53	6.38	9.05	16.12	24.69	40.06	55.64	20
22	2.75	3.82	6.90	9.78	17.68	26.68	43.31	60.15	22
24	2.94	4.09	7.40	10.50	18.99	28.65	46.50	64.59	24
26	3.15	4.37	7.91	11.20	20.27	30.59	49.64	68.95	26
28	3.33	4.64	8.39	11.90	21.54	32.49	52.74	73.28	28
30	3.53	4.91	8.87	12.59	22.78	34.38	55.81	77.54	30
32	3.72	5.17	9.35	13.27	24.01	36.24	58.83	81.77	32
34	3.91	5.43	9.83	13.95	25.23	38.09	61.84	85.94	34
38	4.27	5.95	10.75	15.27	27.64	41.72	67.74	94.16	38
40	4.46	6.20	11.22	15.92	28.83	43.51	70.66	98.22	40
45	4.91	6.83	12.36	17.55	31.74	47.93	77.84	108.22	45
46	5.01	6.95	12.58	17.85	32.32	48.79	79.26	110.19	46
50	5.35	7.44	13.47	19.12	34.60	52.25	84.89	118.04	50
52	5.53	7.69	13.90	19.75	35.74	53.97	87.68		52
54	5.70	7.93	14.34	20.36	36.86	55.66	90.45		54
58	6.04	8.40	15.20	21.59	39.08	59.04	95.93		58
62	6.39	8.87	16.05	22.81	41.29	62.36	101.36		62
66	6.71	9.34	16.90	24.01	43.46	65.66	106.73		66
70	7.04	9.80	17.73	25.22	45.61	68.93	112.05		70
74	7.37	10.36	18.73	26.70	47.74	72.16			74
78	7.70	10.94	19.76	28.16	50.33				78
80	7.86	11.22	20.28	28.91	51.65				80
85	8.35	11.93	21.58	30.76	54.96				85
90	8.85	12.66	22.88	32.61	58.27				90
95	9.35	13.37	24.17	34.46	61.60				95
100	9.86	14.08	25.48	36.32	64.93				100
105	10.37	14.82	26.78	38.19	68.26				105
110	10.87	15.53	28.08	40.04	71.59				110
115	11.37	16.25	29.39	41.91	74.94				115
120	11.88	16.98	30.69	43.79	78.28				120
125	12.38	17.70	32.01	45.67	81.65				125
130	12.89	18.43	33.32						130
135	13.40	19.15	34.63						135
140	13.90	19.89	35.94						140

Output Torque Rating

(Unit) kgm

OUTPUT RPM	2	3	4	5	6	7	8	9	OUTPUT RPM
4	93.0	155	239	373	586	956	1562	2304	4
6	89.5	145	230	356	560	915	1493	2202	6
8	87.7	136	222	346	542	886	1446	2134	8
10	85.1	131	217	336	529	863	1410	2060	10
12	84.4	127	215	324	525	856	1398	1990	12
14	84.6	123	215	315	525	857	1393	1935	14
16	84.6	120	215	307	525	838	1359	1887	16
18	84.2	117	212	301	525	820	1330	1847	18
20	82.9	115	208	295	525	804	1304	1811	20
22	81.4	113	204	290	523	790	1282	1780	22
24	79.8	111	201	285	515	777	1261	1752	24
26	78.8	109	198	281	508	766	1243	1727	26
28	77.5	108	195	277	501	756	1227	1704	28
30	76.6	106	193	273	495	746	1211	1683	30
32	75.7	105	190	270	489	737	1197	1664	32
34	75.0	104	188	267	483	729	1184	1646	34
38	73.2	102	184	262	474	715	1161	1613	38
40	72.5	101	183	259	469	708	1150	1599	40
45	71.1	98.8	179	254	459	693	1126	1566	45
46	70.9	98.4	178	253	457	691	1122	1560	46
50	69.7	96.9	175	249	451	680	1106	1537	50
52	69.2	96.2	174	247	447	676	1098	1527	52
54	68.7	95.6	173	246	444	671	1091		54
58	67.9	94.3	171	242	439	663	1077		58
62	67.1	93.2	169	240	434	655	1064		62
66	66.2	92.2	167	237	429	648	1053		66
70	65.5	91.2	165	235	424	641	1042		70
74	64.9	91.1	165	235	420	635			74
78	64.3	91.3	165	235	420				78
80	64.0	91.3	165	235	420				80
85	64.0	91.4	165	236	421				85
90	64.0	91.6	166	236	422				90
95	64.1	91.7	166	236	422				95
100	64.2	91.7	166	237	423				100
105	64.3	91.9	166	237	423				105
110	64.3	91.9	166	237	424				110
115	64.4	92.0	166	237	424				115
120	64.4	92.1	167	238	425				120
125	64.5	92.2	167	238	425				125
130	64.6	92.3	167						130
135	64.6	92.4	167						135
140	64.7	92.5	167						140

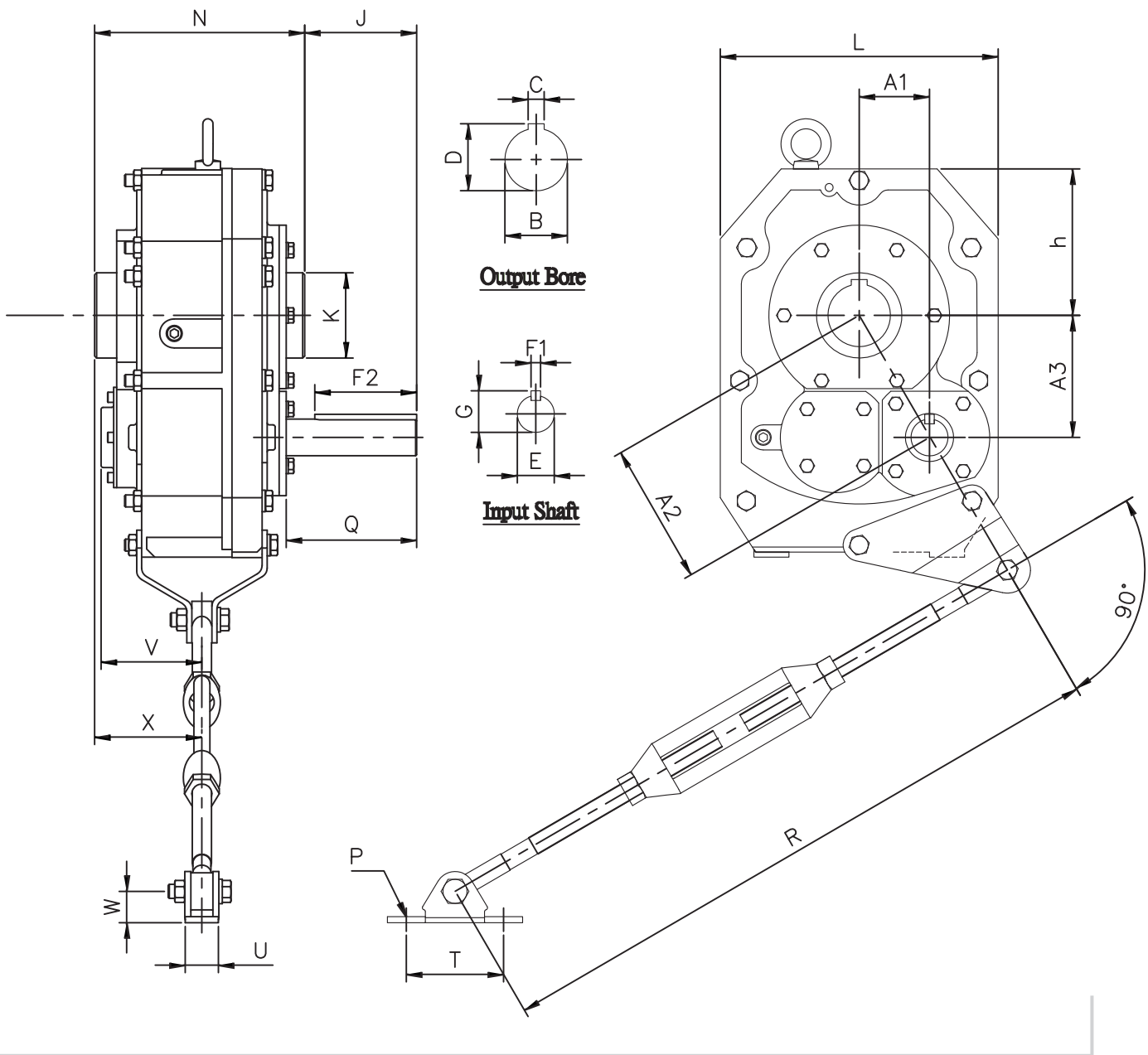
Load Classification

(Unit) mm

SIZE	A1	A2	A3	B	C	D	E	F1
2	54	109.7	95.5	40	12	43.3	19	6
3	59.4	121.5	106	50 55	14 16	53.5 59.3	22 25	6 8
4	70.1	140.4	121.7	65	18	69.4	28	8
5	77	163.3	144	75	20	79.9	32	10
6	103.7	200	171	85	22	90.4	42	12
7	129.5	247.4	210.8	100	28	106.4	48	14
8	153.1	285.8	241.3	100	28	106.4	55	16
9	167.4	321.5	274.5	125	32	132.5	60	18

SIZE	K	L	M	N	P	Q	R min	R max
2	65	212	292	152	11	73	684	837
3	75	235	332	161 173	11	82 87	684	837
4	85	277	382	195	14	95	741	894
5	95	334	463	214	13	100	741	894
6	110	392	553	255	16	115	741	894
7	130	482.5	655	267	16	149	748	900
8	140	517	720	298	19	166	762	914
9	160	597	810	290	19	221	762	914

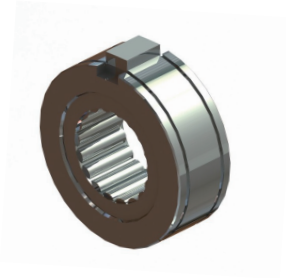
Dimensions



Optional Accessories

Backstop Assemblies

Universal backstop assemblies for shaft mount ensure smooth, forward operation of conveyor with no backslip.





Head Office:

TONSON AUSTRALIA
SAMT

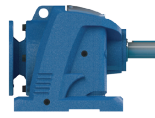
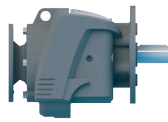
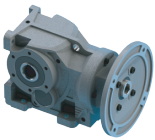
Factory 19, 5 Lyn Parade PRESTONS NSW 2170

Tel: (02) 9607 4100

Fax: (02) 9600 8882

email: sales@samt.com.au

web: <http://www.tonson-motor.com.au>



SHFT MOUNT GEAR REDUCERS
SERIES **SMR**