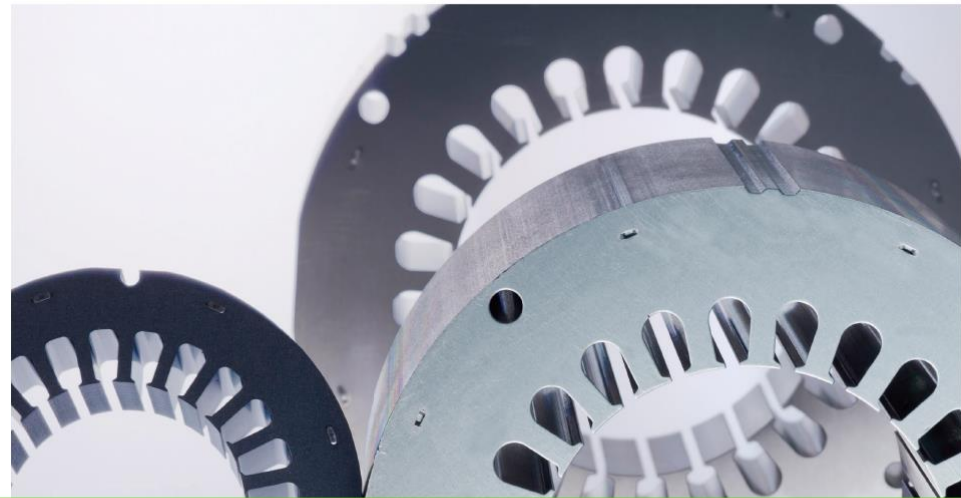


# SAMT



Certified by international  
Standard Organization  
**ISO-9001**



Recognized by Quality Guarantee System



## 1 PH Electric Motors IEC/NEMA



Design & Manufacture  
**AEHL•AEUL Series**  
**HIGH EFFICIENCY MOTOR**

- High Efficiency Motors
- IEC Standard Motors
- NEMA Standard Motors
- Air Compressor Motors
- Water Pump Motors
- Chemical Pump Motors
- Inverter Duty Motors
- Single Phase Motors
- Vibration-Protected Motors
- Custom Motors



# NEMA SINGLE PHASE ROLLED STEEL TEFC / ODP SERIES MOTOR

# IEC SINGLE PHASE ROLLED ODP SERIES MOTOR



- Specifications:
- NEMA Single Phase Rolled Steel Motor
  - Horsepower: 1/3HP ~ 5hp
  - Voltage: 60Hz: 208V - 230V/460V
  - Isolation Class: B.F
  - Protection Class: IP54
  - S.F.: As Per Requirement
  - CE, UL, CSA

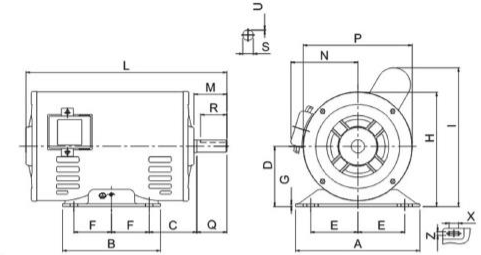


Fig.1

- Specifications:
- IEC Single Phase Rolled Steel Motor
  - Horsepower: 0.2kW ~ 0.75kW
  - Voltage: 50/60Hz: 220V, 230V
  - Isolation Class: B.F
  - Protection Class: IP21, IP44
  - S.F.: As Per Requirement
  - CE, UL, CSA
  - Application: Air Compressor

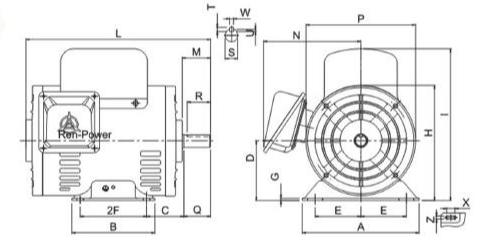
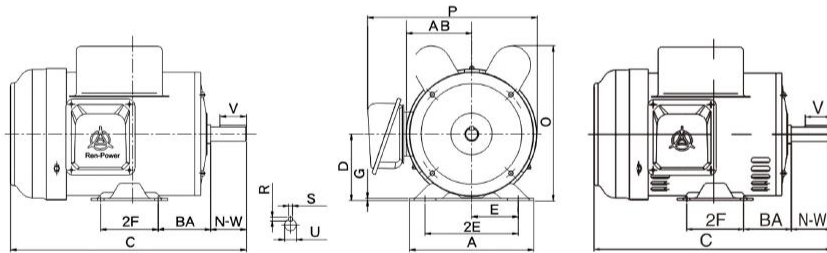


Fig.2



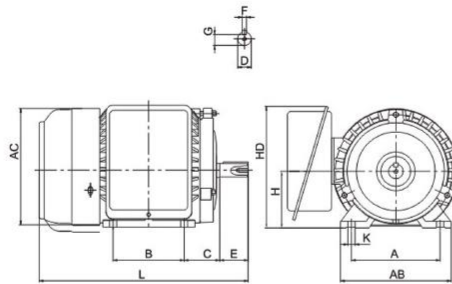
Frame No.	D	E	2F	H	N	O	P	U	V	AB	BA	BB	BD	U	R	S
42	2-5/8	1-3/4	1-11/16	9/32 SLOT	1-1/2	5	4-11/16	3/8	1-1/8	4-1/32	2-1/16	1/8	4-5/8	3/8	21/56	FLAT
48	3	2-1/8	2-3/4	11/32 SLOT	1/78	5-7/8	5-11/16	1/2	1-1/2	4-3/8	2-1/2	1/8	5-5/8	1/2	29/64	FLAT
56	3-1/2	2-7/16	3	11/32 SLOT	2-7/16	6-7/8	6-5/8	5/8	1-7/8	5	2-3/4	1/8	6-1/2	5/8	33/64	3/16
143T	3-1/2	2-3/4	5	11/32	2-1/2	6-7/8	6-5/8	7/8	2-1/4	5-1/4	2-1/4	1/8	6-1/2	7/8	49/64	3/16
145T			4													
182			4-1/2		2-11/16			7/8	2-1/4			1/8	6-1/2	7/8	49/64	3/16
184			5-1/2		2-11/16			7/8	2-1/4			1/8	6-1/2	7/8	49/64	3/16
182T	4-1/2	3-3/4	5-1/2	13/32	2-11/16	8-11/16	7-7/8	7/8	2-1/4	5-7/8	2-3/4	1/4	9	1-1/8	63/64	1/4
184T			5-1/2		3-9/16			1-1/8	2-3/4			1/4	9	1-1/8	63/64	1/4

Frame No.	Fig.	A	B	C	D	E	F	G	H	I	L	M	N	P	SHAFT END					OTHER				
															Q	R	S	T	U	W	X	Z	LS	OS
71	1	148	110	45	71	56.0	45	3.0	136	165	215	33	82	130	30	27	14h6	-	1.0	-	15	9	6202	6202
71	1	148	110	45	71	56.0	45	3.0	136	165	225	33	82	130	30	27	14h6	-	1.0	-	15	9	6202	6202
80M	1	165	130	50	80	62.5	50	3.0	155	185	270	43	92	145	40	28	16j6	5	3.0	5	10	10	6203	6202
90S	2	175	125	63	90	70.0	50	3.0	175	230	280	43	155	165	40	36	19j6	6	3.5	6	10	10	6204	6202

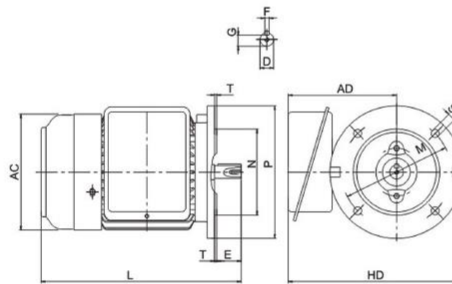
  

Frame No.	Fig No.	Power		Poles (P)	Voltage (V)	Frequency (Hz)	Current (A)	Speed (RPM)	Starting Current (A)	Starting Torque (%)	Break Down Torque (%)
		HP	KW								
71	1	1/4	0.80	4	220-230	50/60	2.8/2.4	1420/1710	11	320	280
71	1	1/3	0.25	4	220-230	50/60	3.1/2.8	1420/1710	13	310	270
80M	1	1/2	0.37	4	220-230	50/60	4.3/3.6	1430/1720	17	290	260
90S	2	1	0.75	4	220-230	50/60	5.2/4.6	1450/1470	30	300	350

# SINGLE PHASE CAST IRON SERIES MOTOR



IMB3



IMB5

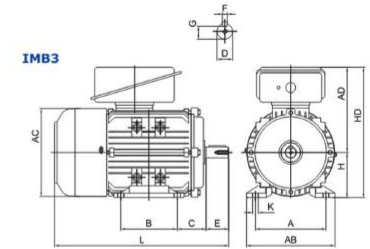
**Specifications:**

- Single Phase Cast Iron Series Motor
- Horsepower: 0.25kW ~ 7.5kW
- Voltage:
  - > 50/60Hz: 110V, 200V, 220V, 230V, 115V/230, 240V
  - > 60Hz: 220V, 230V
- Isolation Class: E.B.F
- Protection Class: IP54/IP55
- S.F.: As Per Requirement
- CE, UL, CSA

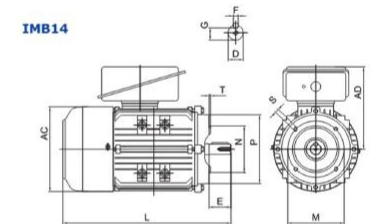
mm

Frame No.	Mounting Specifications (mm)															Overall Specifications (mm)				
	IMB3										IMB5					AB	AC	AD	HD	L
	A	B	C	D	E	F	G	H	K	M	N	P	S	T						
71	112	90	45	14	30	5	11.0	71	7	130	110	160	10.0	3.5	145	156	155	180	275	
80	125	100	50	19	40	6	15.5	80	10	165	130	200	12.0	3.5	156	164	245	175	295	
90	140	125	56	24	50	8	20.0	90	10	165	130	200	12.0	3.5	184	196	160	195	336	
100	160	140	63	28	60	8	24.0	100	12	215	180	250	15/14.5	4.0	200	200	160	215	380	
112	190	140	70	28	60	8	24.0	112	12	215	180	250	15/14.5	4.0	225	234	179	267	400	
132S	216	140	89	38	80	10	33.0	132	12	265	230	300	14.5	4.0	250	264	225	310	460	
132M	216	178	89	38	80	10	33.0	132	12	265	230	300	14.5	4.0	250	264	225	310	498	

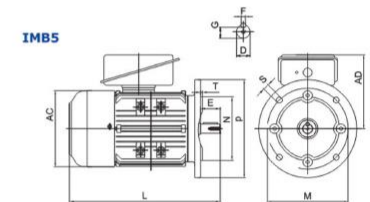
# SINGLE PHASE ALUMINIUM SERIES MOTOR



IMB3



IMB14



IMB5

**Specifications:**

- Single Phase Aluminium Series Motor
- Horsepower: 0.25kW ~ 3.7kW
- Voltage:
  - > 50Hz: 100V, 200V, 220V, 230V, 115V/230V, 240V
  - > 60Hz: 220V, 230V
- Isolation Class: E.B.F
- Protection Class: IP54, IP55
- S.F.: As Per Requirement
- CE, UL, CSA

mm

Frame SIZE	Mounting Specifications (mm)															Overall Specifications (mm)									
	IMB3										IMB14					IMB5					AB	AC	AD	HD	L
	A	B	C	D	E	F	G	H	K	M	N	P	S	T	M	N	P	S	T						
71	112	90	45	14	30	5	11.0	71	7	85	70	105	M6	2.5	130	110	160	10	3.5	142	138	124	195	280	
80	125	100	50	19	40	6	15.5	80	10	100	80	120	M6	3.0	165	130	200	12	3.5	157	156	155	235	310	
90	140	125	56	24	50	8	20.0	90	10	115	95	140	M8	3.0	165	130	200	12	3.5	160	175	160	250	350	
100	160	140	63	28	60	8	24.0	100	12	130	110	160	M8	3.0	215	180	250	15	4.0	198	200	170	270	405	
112	190	140	70	28	60	8	24.0	112	12	130	110	160	M8	3.0	215	180	250	15	4.0	228	219	183	295	420	

# CAST IRON HORIZONTAL PUMP MOTOR - WW Series

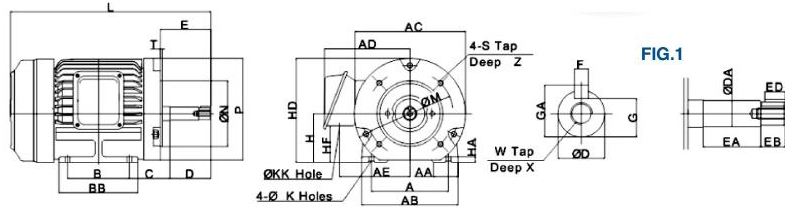


FIG.1

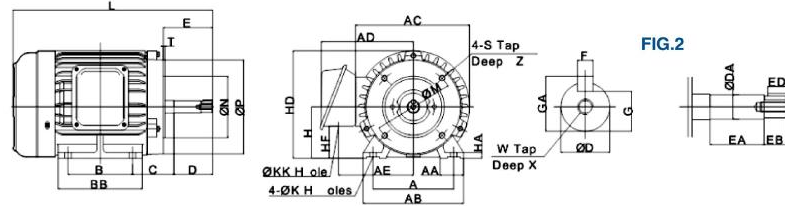


FIG.2

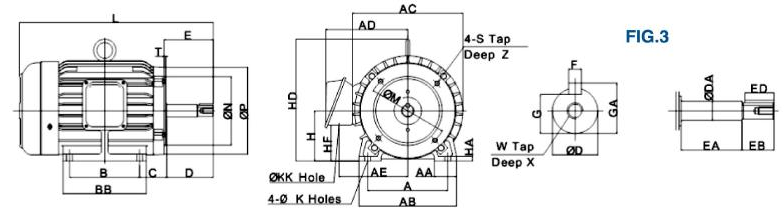


FIG.3

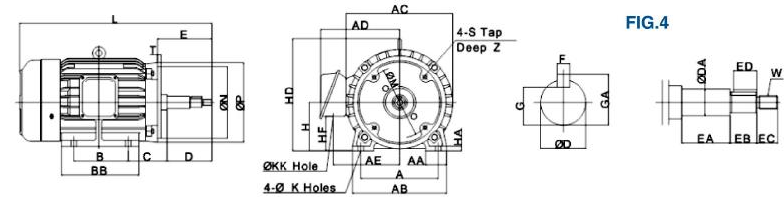


FIG.4

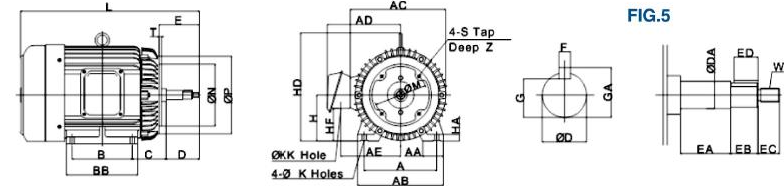


FIG.5

OUTPUT (HP)		Frame Size	FIGURE	SHAFT END																	BEARINGS																		
2P	4P			A	B	C	D	K	H	HD	AE	AB	BB	KK	HA	AA	AC	L	AD	M	N	P	S	T	Z	E	ED	D	DA	F	GA	G	DH	X	EA	EB	EC	LOAD SIDE	OUT OF LOAD SIDE
0.5	0.5	71	1	112	90	45.0	58.0	10.0	71	152	98	140	115	22	8.0	35.5	160	294	125	126	96.0	162	W5 / 16"	3	16	73	15	17	19.0	5	19	14	M8	20	40.0	18	-	6204ZZ	6202ZZ
1	1	80		125	100	47.5	60.5	10.0	80	168	107	155	130	22	9.0	35.5	177	313	137	126	96.0	146	W5 / 16"	3	15	73	15	17	19.0	5	19	14	M8	20	42.0	18	-	6204ZZ	6204ZZ
2	2	90L	2	140	125	53.0	66.0	10.0	90	190	120	170	150	22	10.0	35.5	200	356	150	126	96.0	146	W5 / 16"	3	18	73	15	17	19.0	5	19	14	M8	20	42.0	18	-	6205ZZ	6204ZZ
3	-		140	125	57.5	60.0	10.0	90	190	120	170	150	22	10.0	35.5	200	385	150	165	146.0	184	146.0	184	W3 / 8"	3	15	98	28	22	24.5	7	25	18	M10	20	61.5	32	-	6305ZZ
-	3	100L	3	160	140	56.0	61.0	12.0	100	243	142	195	175	28	12.5	45.0	219	409	175	165	146.0	184	W3 / 8"	3	16	98	28	22	25.0	7	25	18	M10	23	61.0	32	-	6206ZZ	6205ZZ
5	5	112M	3	190	140	63.0	68.0	12.0	112	265	150	224	175	28	14.0	45.0	238	422	182	165	146.0	200	W3 / 8"	9	12	99	28	22	25.0	7	25	18	M10	20	61.0	32	-	6306ZZ	6306ZZ
7.5	10	132S	4	216	140	76.0	101.0	12.0	132	310	176	250	175	35	16.0	45.0	273	501	212	184	216.0	240	W3 / 8"	9	20	141	28	25	32.0	7	28	21	M16	-	58.5	32	25	6308ZZ	6306ZZ
	-	10		132M	216	178	76.0	101.0	12.0	132	310	176	250	212	35	16.0	45.0	273	539	212	184	216.0	240	W3 / 8"	9	20	141	28	25	32.0	7	28	21	M16	-	58.5	32	25	6308ZZ
15	15	160M	5	254	210	94.0	119.0	14.5	160	377	214	300	250	35	18.0	50.0	334	624	251	184	216.0	270	W3 / 8"	9	25	140	28	28	32.0	7	31	24	M16	-	58.5	32	25	6310ZZ	6307ZZ
20	20	160L		254	254	94.0	119.0	14.5	160	377	214	300	300	35	18.0	50.0	334	668	251	184	216.0	270	W3 / 8"	9	25	140	28	28	32.0	7	31	24	M16	-	58.5	32	25	6310ZZ	6307ZZ

mm

**TONSON**  
 TONSON Australia (SAMT) Pty Ltd.  
 Factory 19 / 5 Lyn Parade PRESTONS NSW 2170  
 PH: 02 9607 4100 FAX: 02 9607 4200  
[www.tonson-motor.com.au](http://www.tonson-motor.com.au)

**SAMT**  
 Specialised Air Motors and Transmission

Certified by International  
 Standard Organization  
**ISO-9001**



Recognized by Quality Guarantee System



NEMA TC Motor (TEFC)



NEMA C Face Motor (TENV)



Woodworking Machine Motor



Three Phase Cooling Tower Motor



Single Phase Anti-Vibration Motor



Single Phase Split Motor



Single Phase Magnetic Pump Motor



Treadmill Motor



Three Phase Magnetic Pump Motor



Three Phase TD Rolled Motor



Three Phase TD Square Motor



NEMA TC Motor (ODP)



NEMA C Face Motor (ODP)