

# AUTO-REVERSE TAPPING & CORE DRILLING MACHINE

**FULLY MECHANICAL Tapping** with **automatic reversing** controlled by crank motion. **No electronics!** **Two-mode gearbox:** one mode for auto-reverse tapping and one mode for annular cutters and twist drills. Quick-release spindle for fast, tool-free switching of accessories.



Drill Chuck Arbor  
(Twist drill not included)



Annular Cutter Arbor  
(Annular cutter and pilot pin not included)



Coolant Tank  
Coolant Feed Tap

Crank Handle

Mode Selector (for shifting to Auto-reverse tapping mode or standard drilling mode)

Motor Switch

Quick Release Collar

Magnet Switch

Tap Collet Arbor

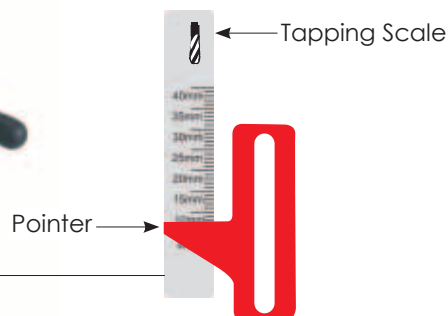
Magnetic Base

Travel Limiter Stop

Tap (Not included)



## Depth Meter



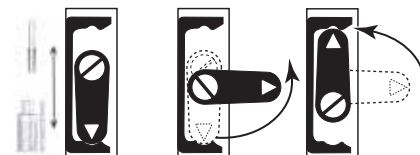
Tapping Scale

Pointer

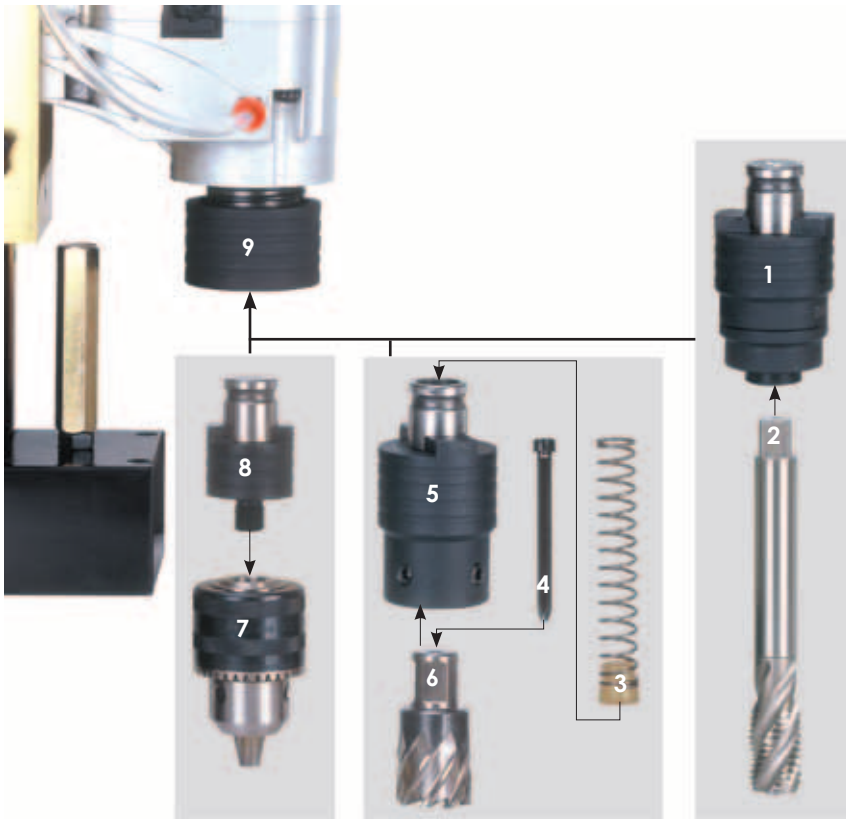
## Mode Selector

Drilling Mode

Tapping Mode



## Mode Selector



1. Tap Collet Arbor
2. Tap (Not included)
3. Coolant Feed Spring And Seal
4. Pilot Pin (Not included)
5. Annular Cutter Arbor  
3/4" (19.05mm)Weldon Shank
6. Annular Cutter (Not included)
7. 1/2" Twist Drill Chuck
8. Drill Chuck Arbor
9. Quick-Release Collar

### ■ TP2000 Tap Collet Arbors

Part Number	For Tap Sizes:
0202-0060-00000-010	M8 DIN376
0202-0060-00000-011	M10 DIN376
0202-0060-00000-001	M12 DIN376
0202-0060-00000-002	M14 DIN376
0202-0060-00000-003	M16 DIN376
0202-0060-00000-004	M18 DIN376/JIS
0202-0060-00000-005	M20 DIN376
0202-0060-00000-006	M12 JIS
0202-0060-00000-007	M14 JIS
0202-0060-00000-008	M16 JIS
0202-0060-00000-009	M20 JIS

### ■ TP2000 Drill Chuck Arbor

Arbor for 1/2" Chuck (1/2"-20 UNF)

**Part Number** 0202-0059-00907-001

### ■ TP2000 Annular Cutter Arbor

Arbor for 3/4" (19.05mm) Weldon Shank  
Annular Cutters

**Part Number** 0202-0058-00907-001

### OPTIONAL ACCESSORIES:



Annular Cutter



Pilot Pin



Magnetic Chip Collector

### (Patented)

Model	TP2000
Power Input	1100W
Voltage	110-120V~ 50-60Hz, 220-240V~ 50-60Hz
Drilling Mode No / Full Load min <sup>-1</sup>	550 / 330
Tapping Mode No / Full Load min <sup>-1</sup>	150 / 90
Annular Cutter Arbor	Set Screw Type, 19.05mm Weldon Shank
Annular Cutters	Dia. 35mmX50mm (1-3/8" X 2")
Taps	20mmX40mm (13/16"X1-9/16")
Twist Drills	13mmX150mm ( 1/2" X6")
Magnetic Adhesion	15,000 N ( 3,372 lb-f )
Net Weight	13.7kg (30.8 Lbs)



### STANDARD ACCESSORIES

- \* Wrench M8
- \* 2.5mm L-Hex Key
- \* 4mm L-Hex Key
- \* Drill Chuck Arbor
- \* 1/2" Chuck And Chuck Key
- \* Annular Cutter Arbor
- \* 3/4" (19.05mm)Weldon Shank
- \* 5 Tap Collet Arbors In Sizes: M12, M14, M16, M18 & M20 (DIN376/JIS)
- \* Coolant Tank Kit
- \* Chip Guard Kit
- \* Safety Chain
- \* Blow Molded Case

### OPTIONAL ACCESSORIES

- \* Other Sizes of Tap Collet Arbors
- \* Overload Protection

# LOW PROFILE MAGNETIC DRILLING MACHINE

Our incredible new low clearance mag drill can enter spaces impossible to reach with a conventional mag drill. Although the total height is only 198mm, conventional 30mm length cutters can be used. No need for special cutters.



Good balance for Carrying



The quick adjustable tool-free lever can be mounted on either side.



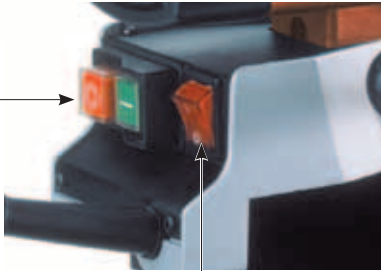
Quick release arbor for fast cutter changes.

Annular Cutter (Not included)

Pilot Pin (Not included)



LED light for work in dark spaces



Motor Switch

Magnet Switch

Model	PMD3530
Power Input	1100W
Voltage	110-120V~ 50-60Hz, 220-240V~ 50-60Hz
No / Full Load min <sup>-1</sup>	650 / 390
Max. Capacity Dia. X Depth of Cut	35mmx 30mm
Weldon Shank	19.05mm
Magnetic Adhesion	15,000 N
Dimensions of Drill	285 mm x 101mm x 200mm
Net Weight	10kg ( 22.4Lbs )



**STANDARD ACCESSORIES**

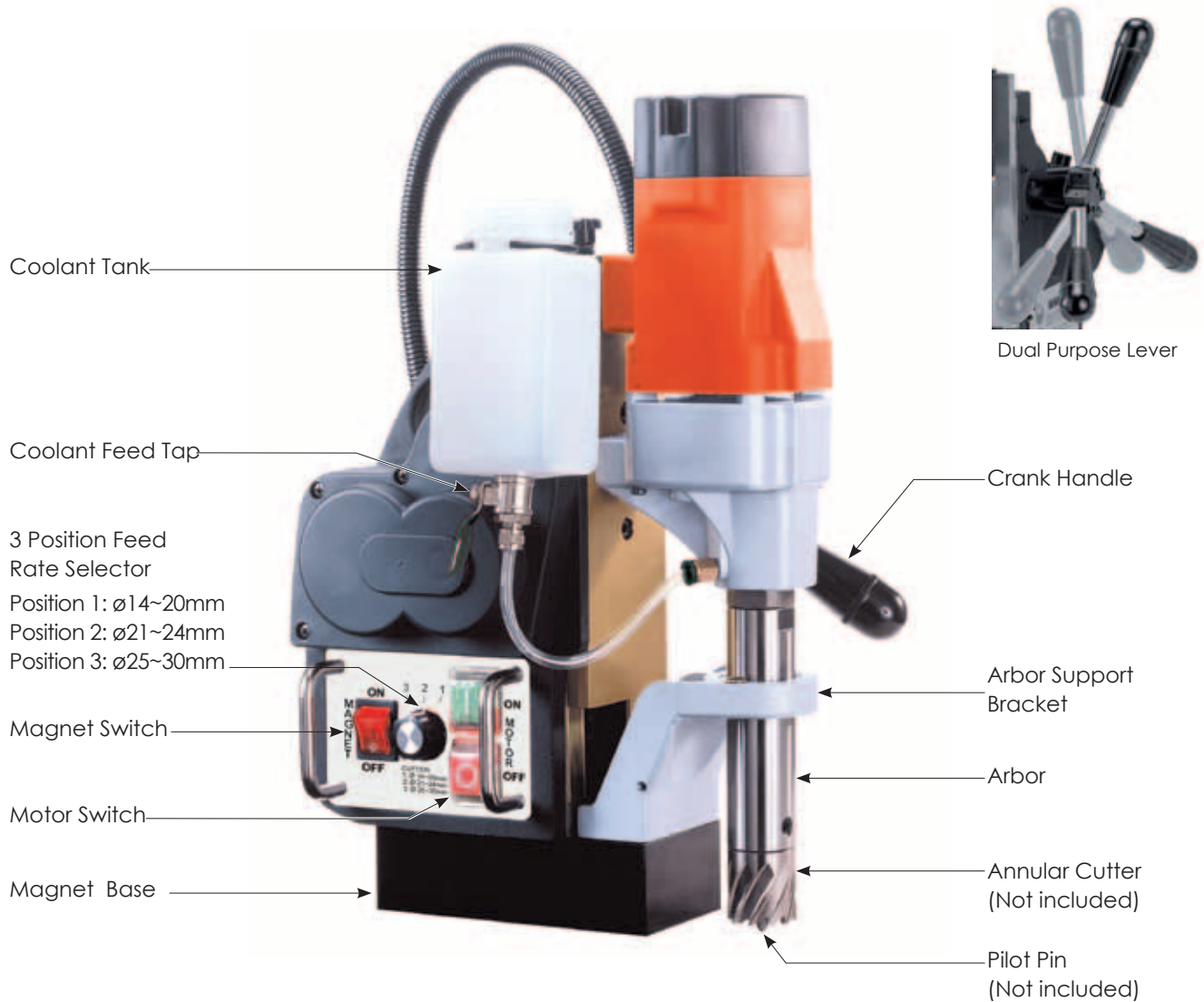
- \* Safety Belt
- \* Chip Guard Kit
- \* Blow Molded Case

**OPTIONAL ACCESSORIES**

- \* Overload Protection



# SEMI AUTO FEED MAGNETIC DRILLING MACHINE



## OPTIONAL ACCESSORIES:



Annular Cutter



Pilot Pin



Magnetic Chip Collector



Model	MD300N	
Power Input	1100W	
Voltage	110-120V~ 50-60Hz, 220-240V~ 50-60Hz	
No / Full Load min <sup>-1</sup>	550 / 330	
Max. Capacity	Dia. X Depth of Cut ( Hand Feed)	35 mm X 50 mm (1-3/8" X 2")
	Dia. X Depth of Cut ( Auto Feed)	30 mm X 45mm (1-3/16"X1-3/4")
	Dia. X Depth of Twist Drill Bit ( Hand Feed Only)	13 mm X 110 mm (1/2" X 4-5/8")
	Dia. X Depth of Taps	NA
Magnetic Adhesion	15,000 N	
Overload Protection	With	
Net Weight	16.5kg (36.3 Lbs )	

## STANDARD ACCESSORIES

- \* Wrench M8
- \* Hex. Key M2.5
- \* Hex. Key M4
- \* Chip Guard Kit
- \* Coolant Tank Kit
- \* Safety Chain
- \* Blow Molded Case
- \* Overload Protection

# SINGLE SPEED MAGNETIC DRILLING MACHINE



The quick-adjustable variable height slide allows a variety of tools to be used. Lower for cutters, raise for twist drills.

## OPTIONAL ACCESSORIES:

### TWIST DRILLING



A revolution in time savings, the new special weldon shank drill chuck mounts directly into the quick release arbor. This means it now takes just seconds to convert from cutters to twist drills!



Model	SMD351L	SMD351H
Power Input	1100W	
Voltage	110-120V~ 50-60Hz, 220-240V~ 50-60Hz	
No / Full Load min <sup>-1</sup>	450 / 270	730 / 440
Max. Capacity	Dia. X Depth of Cut	35mm x 50mm ( 1-3/8" x 2")
	Dia. X Depth Twist Drill Bit	13mm x 140mm (1/2" x 5-1/2")
Magnetic Adhesion	17,000 N	
Net Weight	14kg (30.8 Lbs)	

### STANDARD ACCESSORIES

- \* Wrench M8
- \* Hex. Key M2.5
- \* Hex. Key M4
- \* T- Wrench M6
- \* Coolant Tank Kit
- \* Safety Chain
- \* Chip Guard Kit
- \* Blow Molded Case

### OPTIONAL ACCESSORIES

- \* Overload Protection



# 2 SPEED MAGNETIC DRILLING MACHINE



The 2-Speed Gearbox allows a wide range of cutters to be used and delivers maximum torque

The Quick-Release Arbor makes it quick and tool-free to change cutters and accessories

Annular Cutter (Not included)

Pilot Pin (Not included)

Slide Height Lock  
The quick-adjustable variable height slide allows a variety of tools to be used. Lower for cutters, raise for twist drills.

## OPTIONAL ACCESSORIES:

### TWIST DRILLING



A revolution in time savings, the new special weldon shank drill chuck mounts directly into the quick release arbor. This means it now takes just seconds to convert from cutters to twist drills!



Quick Release Chuck Adaptor And 13mm Chuck & Chuck Key



Annular Cutter Pilot pin



Magnetic Chip Collector



Model	SMD352		SMD502
Power Input	1100W		
Voltage	110-120V~ 50-60Hz, 220-240V~ 50-60Hz		
No / Full Load min <sup>-1</sup>	Speed 1	450 / 270	300 / 180
	Speed 2	730 / 440	450 / 270
Max. Capacity	Dia. X Depth of Cut	35mm x 50mm (1-3/8" x 2")	50mm x 50mm (2" x 2")
	Dia. X Depth Twist Drill Bit	13mm x 140mm (1/2" x 5-1/2")	
Magnetic Adhesion	17,000 N		
Net Weight	15kg ( 33 Lbs)		

### STANDARD ACCESSORIES

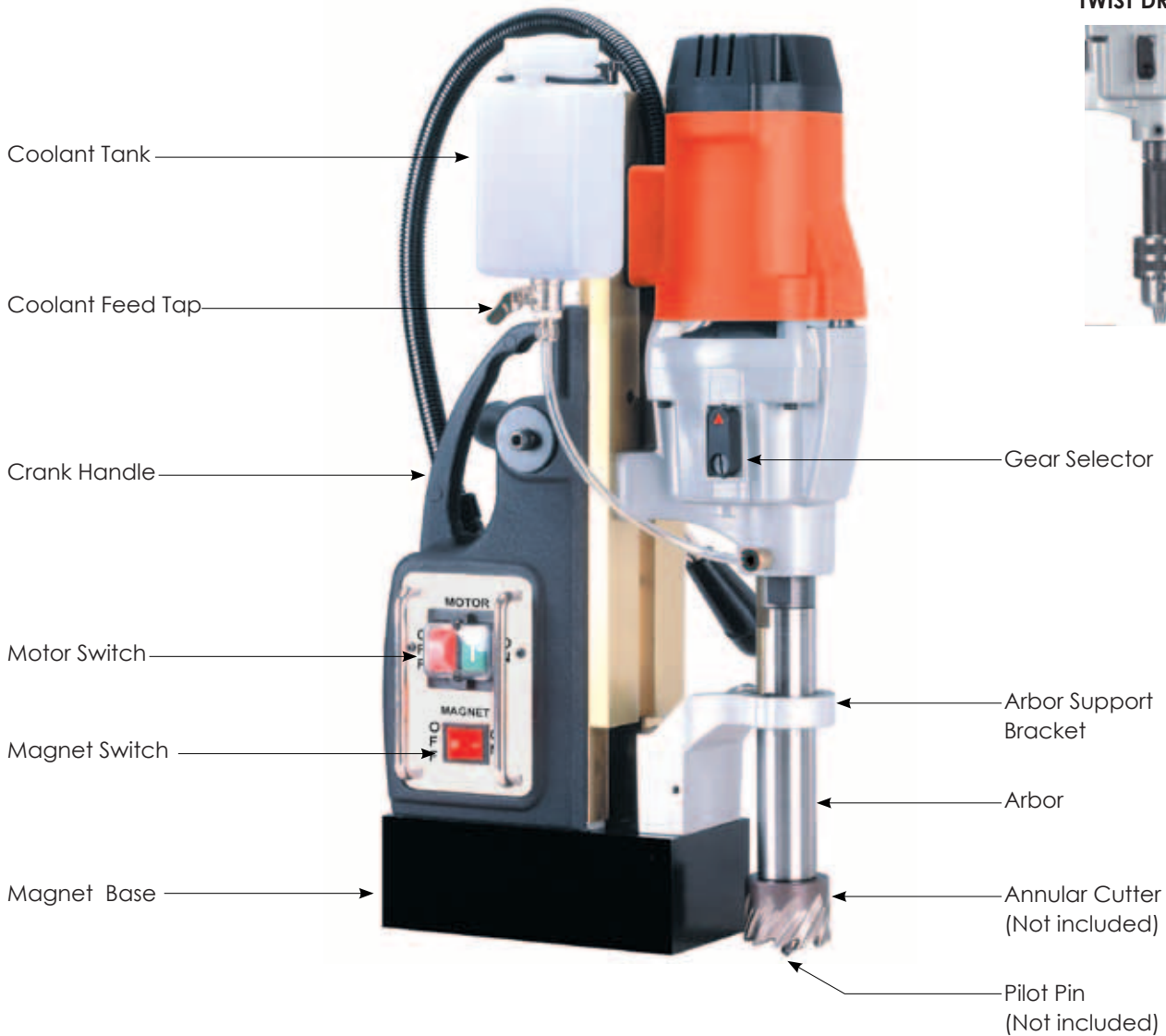
- \* Wrench M8
- \* Hex. Key M2.5
- \* Hex. Key M4
- \* T- wrench M6
- \* Coolant Tank kit
- \* Safety Chain
- \* Chip Guard Kit
- \* Blow Molded Case

### OPTIONAL ACCESSORIES

- \* Overload Protection

# 2 SPEED MAGNETIC DRILLING MACHINE

TWIST DRILLING



## OPTIONAL ACCESSORIES:



Annular Cutter



Pilot Pin



Magnetic Chip Collector



Chuck & Chuck Key



Chuck Adaptor



Model		MD500/2
Power Input		110-120V:1700W, 220-240V:2000W
Voltage		110-120V~ 50-60Hz, 220-240V~ 50-60Hz
No / Full Load min <sup>-1</sup>	Speed 1	380 / 230
	Speed 2	500 / 300
Max. Capacity	Dia. X Depth of Cut	50 mm X 75 mm (2"X3")
	Dia. X Depth of Twist Drill Bit	16mm X 110 mm (5/8" X 4-5/16")
	Dia. X Depth of Taps	NA
Magnetic Adhesion		32,000 N
Net Weight		22.9kg (50.38 Lbs)

### STANDARD ACCESSORIES

- \* Wrench M8
- \* Hex. Key M2.5
- \* Hex. Key M4
- \* Chip Guard Kit
- \* Coolant Tank Kit
- \* Safety Chain
- \* Blow Molded Case

### OPTIONAL ACCESSORIES

- \* Chuck Adaptor
- \* 5/8" (16mm) Chuck & Chuck Key
- \* Overload Protection

# 4 SPEED MAGNETIC DRILLING MACHINE

## Twist Drilling with Chuck



MT3 Chuck Adaptor and Chuck  
(Not included)

## Twist Drilling



MT3 Twist Drill Bit  
(Not included)

Coolant Tank

Coolant Feed Tap

Crank Handle

Motor Switch

Reversing Switch

Magnet Switch

Magnet Base

Gear Selector

Ejector Port

Arbor

Arbor Support Bracket

Annular Cutter  
(Not included)

Pilot Pin  
(Not included)

## Tapping Mode (Optional)



MT3 Large Range  
Tapping Chuck &  
Clamp Collet



MT3 Small Range  
Tapping Chuck &  
Clamp Collet

## OPTIONAL ACCESSORIES:



Annular Cutter



Pilot Pin



Magnetic Chip Collector



Model	MD750/4	
Power Input	110-120V:1700W, 220-240V:2000W	
Voltage	110-120V~ 50-60Hz, 220-240V~ 50-60Hz	
No/Full Load min <sup>-1</sup>	Speed 1	150 / 90
	Speed 2	200 / 120
	Speed 3	300 / 180
	Speed 4	380 / 230
Max. Capacity	Dia. X Depth of Cut	75 mm X 50 mm (3"X2")
	Dia. X Depth of MT3 Twist Drill Bit	32 mm X 150 mm (1-1/4" X 4-7/8")
	Dia. X Depth of MT3 Chuck Adaptor With Twist Drill Bit	16 mm X 110 mm (5/8" X 4-5/16")
	Dia. X Depth of Taps	25.4 mm X 40 mm (1" X 1-9/16")
Magnetic Adhesion	32,000 N	
Net Weight	24.8kg ( 54.56 Lbs)	

## STANDARD ACCESSORIES

- \* Wrench M8
- \* Hex. Key M2.5
- \* Hex. Key M4
- \* Chip Guard Kit
- \* Coolant Tank Kit
- \* Safety Chain
- \* Drift
- \* Blow Molded Case

## OPTIONAL ACCESSORIES

- \* MT3 Chuck Adaptor
- \* 5/8" (16mm) Chuck & Chuck Key
- \* MT3 Tapping Adaptor
- \* Tapping Attachment
- \* Overload Protection

# 4 SPEED SWIVEL BASE MAGNETIC DRILLING MACHINE

## Twist Drilling with Chuck



MT3 Chuck Adaptor and Chuck (Not included)

## Twist Drilling



MT3 Twist Drill Bit (Not included)

Coolant Tank

Coolant Feed Tap

Crank Handle

Motor Switch

Reversing Switch

Magnet Switch

Magnet Base

Gear Selector

Ejector Port

Arbor

Arbor Support Bracket

Annular Cutter (Not included)

Pilot Pin (Not included)

## SWIVEL BASE EQUIPPED MODELS



Forward and back 20mm  
R&L (20 Deg.)

## Tapping Mode (Optional)



MT3 Large Range Tapping Chuck & Clamp Collet



MT3 Small Range Tapping Chuck & Clamp Collet



Model	MDS750/4	
Power Input	110-120V:1700W, 220-240V:2000W	
Voltage	110-120V~ 50-60Hz, 220-240V~ 50-60Hz	
No/Full Load min <sup>-1</sup>	Speed 1	150 / 90
	Speed 2	200 / 120
	Speed 3	300 / 180
	Speed 4	380 / 230
Max. Capacity	Dia. X Depth of Cut	75 mm X 50 mm (3"X2")
	Dia. X Depth of MT3 Twist Drill Bit	32 mm X 150 mm (1-1/4" X 4-7/8")
	Dia. X Depth of MT3 Chuck Adaptor With Twist Drill Bit	16 mm X 110 mm (5/8"X4-5/16")
	Dia. X Depth of Taps	25.4 mm X 40 mm (1" X 1-9/16")
Magnetic Adhesion	32,000 N	
Net Weight	27kg ( 59.4 Lbs)	

### STANDARD ACCESSORIES

- \* Wrench M8
- \* Hex. Key M2.5
- \* Hex. Key M4
- \* Chip Guard Kit
- \* Coolant Tank Kit
- \* Safety Chain
- \* Drift
- \* Wrench M17
- \* Blow Molded Case

### OPTIONAL ACCESSORIES

- \* MT3 Chuck Adaptor
- \* 5/8" (16mm) Chuck & Chuck Key
- \* MT3 Tapping Adaptor
- \* Tapping Attachment
- \* Overload Protection

# 4 SPEED MAGNETIC DRILLING MACHINE

This is our largest capacity machine yet. It's an amazingly powerful and versatile machine with the very important addition of stepless variable speed with feedback speed stabilization. The feedback circuitry allows maximum power, even when the speed is reduced: Ideal for maximum size cutters. The smart electronics also feature soft start and overload protection. For safety there is an effective mechanical clutch.

## Twist Drilling with Chuck



MT3 Chuck Adaptor and Chuck (Not included)

Stepless variable speed wheel

Coolant Tank

Super efficiency 2000W motor with smart electronic controls including soft start, overload and variable speed with feedback speed stabilization.

Rugged four speed gearbox with mechanical clutch

Gear Selector

Ejector Port

Through-the-arbor cutting fluid system

Special MT3 high-torque tang drive arbor (still mounts any MT3 accessory)

Motor switch

Reversing Switch

Magnet Switch

## Twist Drilling



MT3 Large Range Tapping Chuck & Clamp Collet



MT3 Small Range Tapping Chuck & Clamp Collet



Annular Cutter



Pilot Pin



Magnetic Chip Collector



MT3 Twist Drill Bit (Not included)

### OPTIONAL ACCESSORIES:



Model	MD120/4	
Power Input	110-120V: 1700W, 220-240V: 2000W	
Voltage	110-120V~ 50-60Hz, 220-240V~ 50-60Hz	
No Load min <sup>-1</sup>	Speed 1	55-115
	Speed 2	90-210
	Speed 3	110-250
	Speed 4	200-450
Max. Capacity	Dia. X Depth of Cut with 31.7mm (1-1/4") Weldon Shank Annular Cutter Arbor	120mm x 50mm
	Dia. X Depth of Cut with 19.05mm (3/4") Weldon Shank Annular Cutter Arbor	120mm x 50mm
	Dia. X Depth of Cut with Quick-Release Arbor	60mm x 50mm
	Dia. X Depth of MT3 Twist Drill Bit	32mm x 200mm
	Dia. X Depth of MT3 Chuck Adaptor with Twist Drill bit	16mm x 110mm
	Dia. X Depth of Taps	32mm x 40mm
Overload Protection	With	
Magnetic Adhesion	32,000 N	
Net Weight	28.31kg ( 62.4 Lbs)	

### STANDARD ACCESSORIES

- \* Wrench M8
- \* Hex key M2.5 & M5
- \* Chip Guard Kit
- \* Coolant Tank Kit
- \* Safety Chain
- \* Drift
- \* Blow Molded Case

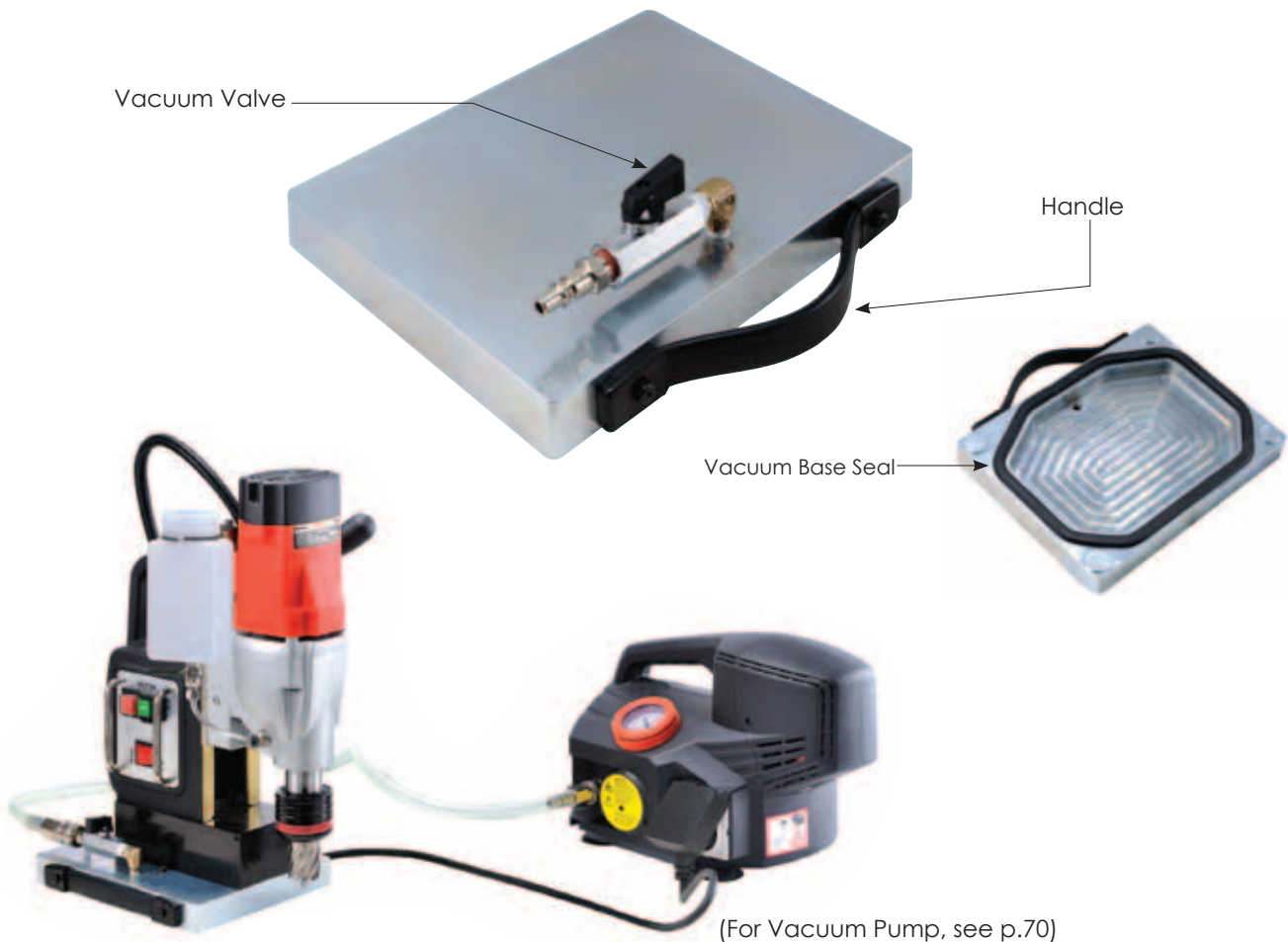
## VACUUM BASE ADAPTER

The Vacuum Base Adapter allows any mag drill to drill up to 55mm holes on surfaces where the magnet's adhesion would not work or would be problematic such as:

- Non-magnetic surfaces such as aluminum, brass, stainless steel, fiberglass, etc.
- Thin steel or even sheet metal where the magnetic force would be insufficient.
- Patterned surfaces with irregularities less than 3mm deep such as diamond plate.

The mag drill attaches magnetically to the vacuum adapter plate and the adapter adheres to the work surface by vacuum force. A vacuum pump must be used which can achieve a minimum of 0.8 bar (26inHg) vacuum and flow of 30 L/min (1 cfm) such as our VP140 Vacuum Pump.

Drilling with cutters larger than 55mm is not recommended with this device.



- **Vise (for use with MDS750/4)**  
Max. Capacity 1-1/4" to 8-1/4"  
Part Number 0299-0062-00000-001

- **Vise (for use with MD750/4)**  
Max. Capacity 1-1/4" to 8-1/4"  
Part Number 0299-0062-00000-002



# MAGNETIC DRILLING MACHINES OPTIONAL ACCESSORY SPECIFICATIONS

## ■ MD750/4 , MDS750/4 , MD120/4 Tapping Attachments

### ■ MT3 Small Range Tapping Chuck & Small Range Clamp Collets (for use with 302-04293-901-001)

#### Part Number

302-04293-901-001

MT3 Small Range Tapping Chuck (For Clamp Collets 3 ~ 15mm)



#### Clamp Collets

Part Number	Nominal Tap Sizes:	Shank Dia.:	Size of Square:
305-00155-000-001	M3-JIS	4.0	3.2
305-00155-000-002	M4-JIS	5.0	4.0
305-00155-000-003	M5-JIS	5.5	4.5
305-00155-000-004	M6-JIS	6.0	4.5
305-00155-000-005	M7/M8-JIS	6.2	5.0
305-00155-000-006	M9/M10-JIS	7.0	5.5
305-00155-000-007	M11-JIS	8.0	6.0
305-00155-000-008	M12-JIS	8.5	6.5
305-00155-000-009	M14/M15-JIS	10.5	8.0
305-00155-000-040	UNC5/16-JIS	6.1	5.0
305-00155-000-041	UNC1/2-JIS	9.0	7.0

#### Clamp Collets

Part Number	Nominal Tap Sizes:	Shank Dia.:	Size of Square:
305-00155-000-015	M3.5-DIN376	2.5	2.1
305-00155-000-016	M4-DIN376	2.8	2.1
305-00155-000-017	M4.5 / M5 -DIN376	3.5	2.7
305-00155-000-019	M6-DIN376	4.5	3.4
305-00155-000-020	M7-DIN376	5.5	4.3
305-00155-000-021	M8-DIN376	6.0	4.9
305-00155-000-022	M10-DIN376	7.0	5.5
305-00155-000-023	M12-DIN376	9.0	7.0
305-00155-000-024	M14-DIN376	11.0	9.0

### ■ MT3 Large Range Tapping Chuck & Large Range Clamp Collets (for use with 302-04293-901-002)

#### Part Number

302-04293-901-002

MT3 Large Range Tapping Chuck (For Clamp Collets 7 ~ 25mm)



#### Clamp Collets

Part Number	Nominal Tap Sizes:	Shank Dia.:	Size of Square:
305-00155-000-030	M7/M8-JIS	6.2	5.0
305-00155-000-031	M9/M10-JIS	7.0	5.5
305-00155-000-032	M11-JIS	8.0	6.0
305-00155-000-033	M12-JIS	8.5	6.5
305-00155-000-034	M14/M15-JIS	10.5	8.0
305-00155-000-010	M16-JIS	12.5	10.0
305-00155-000-011	M18-JIS	14.0	11.0
305-00155-000-012	M20-JIS	15.0	12.0
305-00155-000-013	M22 / UNC7/8 -JIS	17.0	13.0
305-00155-000-014	M24/M25-JIS	19.0	15.0
305-00155-000-042	UNC1/2-JIS	9.0	7.0

#### Clamp Collets

Part Number	Nominal Tap Sizes:	Shank Dia.:	Size of Square:
305-00155-000-043	UNC5/8-JIS	12.0	9.0
305-00155-000-036	M8-DIN376	6.0	4.9
305-00155-000-037	M10-DIN376	7.0	5.5
305-00155-000-038	M12-DIN376	9.0	7.0
305-00155-000-039	M14-DIN376	11.0	9.0
305-00155-000-025	M16-DIN376	12.0	9.0
305-00155-000-026	M18-DIN376	14.0	11.0
305-00155-000-027	M20-DIN376	16.0	12.0
305-00155-000-028	M22 / M24 -DIN376	18.0	14.5

### ■ Weldon shank annular cutter arbors (for use MD750/4 , MDS750/4 , MD120/4 )



( 2 Screws, 1 C- clip, 1 Washer, 1 O-ring, 1 Water seal , 1 Spring are included )

#### Part Number

0299-0078-00000-009

0299-0078-00000-010

#### Sizes:

ø19.05mm (212mm)

ø19.05mm (237mm)

#### Application

MD750/4

MDS750/4

### ■ Quick-Release arbors (for use MD750/4 , MDS750/4 , MD120/4 ) ( 1 Spring & 1 Water seal are included )



#### Part Number

0299-0078-00000-001

0299-0078-00000-005

0299-0078-00000-018

0299-0078-00000-023

0299-0078-00000-012

0299-0078-00000-015

0299-0078-00000-024

0299-0078-00000-016

#### Sizes:

Single flat side with lock pin 12.3mm

Single flat side with lock pin 11.7mm

Two flat side with lock pin 12.3mm

Two flat side with lock pin 11.7mm

Single flat side with lock pin 12.3mm

Single flat side with lock pin 11.7mm

Two flat side with lock pin 12.3mm

Two flat side with lock pin 11.7mm

#### Application

MD750/4

MD750/4

MD750/4

MD750/4

MDS750/4

MDS750/4

MDS750/4

MDS750/4

■ **Chuck Adaptors** (to allow mounting of a chuck for twist drilling)



Part Number	Description	Mount
302-04020-901-002	<b>MD500/2</b> Chuck Adaptor for 5/8" Chucks (5/8"-16 UNF)	M27-3.0



Part Number	Description	Mount
0202-0016-00000-001	<b>MD750/4 , MDS750/4 , MD120/4 (MT3 Machines)</b> Chuck Adaptor for 5/8" Chucks	MT3/5/8"-16
0202-0016-00000-003	Chuck Adaptor for B16 Taper Mount Chucks	MT3/B16

■ **Quick-Release Chuck Adaptors**



Part Number	Description	Application
302-04240-901-001	Single flat side (shank 17.4mm) Chuck adaptor for 1/2" chuck	SMD351L, SMD351H,
302-04240-901-002	Two flat side (shank 17.4mm) Chuck adaptor for 1/2" chuck	SMD352, SMD502
302-04240-903-003	Single flat side (shank 17.9mm) Chuck adaptor for 1/2" chuck	
302-04240-903-004	Two flat side (shank 17.9mm) Chuck adaptor for 1/2" chuck	

■ **Drill Chucks & Chuck Keys**



Part Number	Description & Clamping Capacity	Mount	Application
305-00014-000-002	5/8" Chuck (w/ Key) (1mm~16mm)	5/8"-16	EVP180, MD750/4, MDS750/4, MD500/2
305-00014-000-001	1/2" Chuck (w/ Key) (1mm~13mm)	1/2"-20	EV21, MD500/2, SMD351H, SMD351L, SMD352, SMD502,

■ **Pilot Pins**



Part Number	Description	Mount
305-00016-000-004	Pilot Pins for TCT 35mm Length Cutters	8 x 91mm
305-00016-000-005	Pilot Pins for TCT 50mm Long Reach Cutters	8 x 112mm
305-00016-000-003	Pilot Pins for HSS 50mm Long Reach Cutters	6.35 x 105mm
305-00016-000-002	Pilot Pins for HSS 30mm Length Cutters	6.35 x 77mm
305-00016-000-001	Pilot Pins for HSS 30mm Length Cutters	6.35 x 77mm(step pin)
305-00016-000-006	Pilot Pins for TCT 12-13mm	4.75 x 85mm
305-00016-000-007	Pilot Pins for TCT 14-15mm	7.1 x 91mm

■ **Magnet Chip Collector**

(Push in the plunger to activate magnetic force to collect chips, Pull back the plunger to release the chips.)



Part Number	Dimensions
305-00173-000-001	400mm x 25mm

■ **Cutter Set in Case**



Part Number	Description
0299-0052-00004-001 (Black)	Includes: step pilot pin, and 30L cutters in sizes 12, 14, 16, 18, 20 & 22mm.

## TCT Annular Cutters with 19.05mm Weldon Shank



Long-wearing Tungsten Carbide Tips

### 35mm Length Cutters

Part number	Spec.
305-00161-000-096	35Lx12mm
305-00161-000-001	35Lx14mm
305-00161-000-002	35Lx15mm
305-00161-000-003	35Lx16mm
305-00161-000-004	35Lx17mm
305-00161-000-005	35Lx18mm
305-00161-000-006	35Lx19mm
305-00161-000-007	35Lx20mm
305-00161-000-008	35Lx21mm
305-00161-000-009	35Lx22mm
305-00161-000-010	35Lx23mm
305-00161-000-011	35Lx24mm
305-00161-000-012	35Lx25mm
305-00161-000-013	35Lx26mm
305-00161-000-014	35Lx27mm
305-00161-000-015	35Lx28mm
305-00161-000-016	35Lx29mm
305-00161-000-017	35Lx30mm

### 35mm Length Cutters

Part number	Spec.
305-00161-000-018	35Lx31mm
305-00161-000-019	35Lx32mm
305-00161-000-020	35Lx33mm
305-00161-000-021	35Lx34mm
305-00161-000-022	35Lx35mm
305-00161-000-023	35Lx36mm
305-00161-000-024	35Lx37mm
305-00161-000-025	35Lx38mm
305-00161-000-026	35Lx39mm
305-00161-000-027	35Lx40mm
305-00161-000-028	35Lx41mm
305-00161-000-029	35Lx42mm
305-00161-000-030	35Lx43mm
305-00161-000-031	35Lx44mm
305-00161-000-032	35Lx45mm
305-00161-000-033	35Lx46mm
305-00161-000-034	35Lx47mm
305-00161-000-035	35Lx48mm
305-00161-000-036	35Lx49mm
305-00161-000-037	35Lx50mm

### 50mm Long Reach Cutters

Part number	Spec.
305-00161-000-097	50Lx16mm
305-00161-000-038	50Lx18mm
305-00161-000-039	50Lx19mm
305-00161-000-040	50Lx20mm
305-00161-000-041	50Lx21mm
305-00161-000-042	50Lx22mm
305-00161-000-043	50Lx23mm
305-00161-000-044	50Lx24mm
305-00161-000-045	50Lx25mm
305-00161-000-046	50Lx26mm
305-00161-000-047	50Lx27mm
305-00161-000-048	50Lx28mm
305-00161-000-049	50Lx29mm
305-00161-000-050	50Lx30mm
305-00161-000-051	50Lx31mm
305-00161-000-052	50Lx32mm
305-00161-000-053	50Lx33mm
305-00161-000-054	50Lx34mm
305-00161-000-055	50Lx35mm
305-00161-000-056	50Lx36mm
305-00161-000-057	50Lx37mm
305-00161-000-058	50Lx38mm
305-00161-000-059	50Lx39mm
305-00161-000-060	50Lx40mm
305-00161-000-061	50Lx41mm
305-00161-000-062	50Lx42mm
305-00161-000-063	50Lx43mm
305-00161-000-064	50Lx44mm
305-00161-000-065	50Lx45mm
305-00161-000-066	50Lx46mm

### 50mm Long Reach Cutters

Part number	Spec.
305-00161-000-067	50Lx47mm
305-00161-000-068	50Lx48mm
305-00161-000-069	50Lx49mm
305-00161-000-070	50Lx50mm
305-00161-000-071	50Lx51mm
305-00161-000-072	50Lx52mm
305-00161-000-073	50Lx53mm
305-00161-000-074	50Lx54mm
305-00161-000-075	50Lx55mm
305-00161-000-076	50Lx56mm
305-00161-000-077	50Lx57mm
305-00161-000-078	50Lx58mm
305-00161-000-079	50Lx59mm
305-00161-000-080	50Lx60mm
305-00161-000-081	50Lx61mm
305-00161-000-082	50Lx62mm
305-00161-000-083	50Lx63mm
305-00161-000-084	50Lx64mm
305-00161-000-085	50Lx65mm
305-00161-000-086	50Lx66mm
305-00161-000-087	50Lx67mm
305-00161-000-088	50Lx68mm
305-00161-000-089	50Lx69mm
305-00161-000-090	50Lx70mm
305-00161-000-091	50Lx71mm
305-00161-000-092	50Lx72mm
305-00161-000-093	50Lx73mm
305-00161-000-094	50Lx74mm
305-00161-000-095	50Lx75mm

## HSS Annular Cutters with 19.05mm Weldon Shank



### 30mm Length Cutters

Part Number	Spec.
305-00162-000-001	30Lx12mm
305-00162-000-002	30Lx13mm
305-00162-000-003	30Lx14mm
305-00162-000-004	30Lx15mm
305-00162-000-005	30Lx16mm
305-00162-000-006	30Lx17mm
305-00162-000-007	30Lx18mm
305-00162-000-008	30Lx19mm
305-00162-000-009	30Lx20mm
305-00162-000-010	30Lx21mm
305-00162-000-011	30Lx22mm
305-00162-000-012	30Lx23mm
305-00162-000-013	30Lx24mm
305-00162-000-014	30Lx25mm
305-00162-000-015	30Lx26mm
305-00162-000-016	30Lx27mm
305-00162-000-017	30Lx28mm

### 30mm Length Cutters

Part Number	Spec.
305-00162-000-018	30Lx29mm
305-00162-000-019	30Lx30mm
305-00162-000-020	30Lx31mm
305-00162-000-021	30Lx32mm
305-00162-000-022	30Lx33mm
305-00162-000-023	30Lx34mm
305-00162-000-024	30Lx35mm
305-00162-000-025	30Lx36mm
305-00162-000-026	30Lx37mm
305-00162-000-027	30Lx38mm
305-00162-000-028	30Lx39mm
305-00162-000-029	30Lx40mm
305-00162-000-030	30Lx41mm
305-00162-000-031	30Lx42mm
305-00162-000-032	30Lx43mm
305-00162-000-033	30Lx44mm
305-00162-000-034	30Lx45mm
305-00162-000-035	30Lx46mm
305-00162-000-036	30Lx47mm
305-00162-000-037	30Lx48mm
305-00162-000-038	30Lx49mm
305-00162-000-039	30Lx50mm

(Sizes from 30L x 51mm to 100mm available.)

### 50mm Length Cutters

Part Number	Spec.
305-00162-000-040	50Lx12mm
305-00162-000-041	50Lx13mm
305-00162-000-042	50Lx14mm
305-00162-000-043	50Lx15mm
305-00162-000-044	50Lx16mm
305-00162-000-045	50Lx17mm
305-00162-000-046	50Lx18mm
305-00162-000-047	50Lx19mm
305-00162-000-048	50Lx20mm
305-00162-000-049	50Lx21mm
305-00162-000-050	50Lx22mm
305-00162-000-051	50Lx23mm
305-00162-000-052	50Lx24mm
305-00162-000-053	50Lx25mm
305-00162-000-054	50Lx26mm
305-00162-000-055	50Lx27mm
305-00162-000-056	50Lx28mm
305-00162-000-057	50Lx29mm
305-00162-000-058	50Lx30mm
305-00162-000-059	50Lx31mm
305-00162-000-060	50Lx32mm
305-00162-000-061	50Lx33mm
305-00162-000-062	50Lx34mm

### 50mm Length Cutters

Part Number	Spec.
305-00162-000-063	50Lx35mm
305-00162-000-064	50Lx36mm
305-00162-000-065	50Lx37mm
305-00162-000-066	50Lx38mm
305-00162-000-067	50Lx39mm
305-00162-000-068	50Lx40mm
305-00162-000-069	50Lx41mm
305-00162-000-070	50Lx42mm
305-00162-000-071	50Lx43mm
305-00162-000-072	50Lx44mm
305-00162-000-073	50Lx45mm
305-00162-000-074	50Lx46mm
305-00162-000-075	50Lx47mm
305-00162-000-076	50Lx48mm
305-00162-000-077	50Lx49mm
305-00162-000-078	50Lx50mm

(Sizes from 50L x 51mm to 100mm available.)