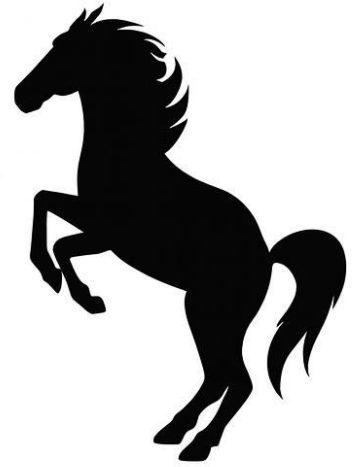


Stallion Stainless Steel Electric Motors



"The Washdown Champion"



Stainless Steel Electric Motors



Table of Contents

About Us	1
Stainless Steel IP69 Electric Motors	2
Specifications	3
TENV Dimensions	4
TEFC Dimensions	7



Specialised Air Motors & Transmission (SAMT) - incorporating TONSON - was founded in 1966 and provides efficient solutions and equipment to all major industries including mining, chemical, food, paper, plastic, power transmission, manufacturing and pharmaceutical.

Our commitment to you is best service, quick lead times and very competitive prices.

Innovation & Quality

Specialised Air Motors & Transmission is committed to providing clever solutions for all hazardous environments and continues to develop smart ways to meet requirements from all different industries; our products meet CE standards ISO9002, ISO9001 and patents are registered globally including USA, Taiwan and China.

Unlike other conventional methods our products mainly use air instead of electricity as the source of power. This eliminates the chance of electricity shock and fire, which are the most crucial factors for industries involved in chemical, flammable or volatile contents.

Specialised Air Motors & Transmission products include air/electric motors, air/electric mixers and air fans which are engineered to meet the highest standards featuring 100% explosion-proof, low air consumption, light weight, high torque, reversible step less speed control, easy maintenance and various mounting methods. And can be used in very harsh conditions such as humidity, high temperature and flammable environments.

Products & Services

SAMT's other popular products include Pressure Tanks up to 200L (with and without integrated mixer), spray guns, pneumatic double diaphragm pumps, vertical pumps, magic drum carriers, non-spark drum openers, propellers, plus many more exciting and innovative products.

We also have the technical capability and expertise to provide complete power transmission solutions to meet your specific requirements, including full engineering assistance with design, selection and site installation. We also specialise in the supply of all types of Industrial gearboxes including Helical, Worm, Bevel-Helical, Bevel, screw jacks and planetary. All are interchangeable with other internationally recognised brands.

SAMT can also customise any product to suit your specific requirements and will investigate the possibilities of developing new products to satisfy your special specifications.



Stallion Stainless Steel Electric Motors



"The Washdown Champion"

IP69



Specifications

- Frame size: 63 – 132
- Power Range: 0.18kW – 7.5kW
- Torque: 1.8Nm – 70 Nm
- Mounting options: B3, B5, B14
- Phase: 1Ph/3Ph Stainless Steel AC Motor
- Pole: 4
- International protections: IP 69 Washdown
- Insulation Class: F
- Duty: S1

Features

- Special advanced stator insulation system
- Thermistors as standard: PTC style thermistors for early detection of excessive temperature rise.
- Noise Levels: DBA noise is the lowest in industry
- Washdown duty applications
- Oversized bearings on both ends c/w locked
- Drive-end bearing construction
- AS 1359 MEPS Standard

Applications

- Food processing industry
- Chemical & Medical processing industry
- Bottling industry
- Conveyors industry
- Boat/fishing industry



SPECIFICATIONS

	Model YSS	RPM	HP	kW	AMPS (A)	Temp. Rise	Locked Rotor		Break Down Torque	WT (Kg)	BRGS.	Noise L _{wa} (dB)
							Torque	AMPS				
TENV	6132	2875	1/4	0.18	1.1/0.6	55	3.1	6.8	4.1	8.5	6202	58
	6322	2880	1/3	0.25	1.15/0.63	64	3.0	7.0	4.0	8.5	6202	58
	7112	2880	1/2	0.37	1.48/0.88	64	3.5	8.0	4.4	11.5	6203	61
	7122	2900	3/4	0.55	2.0/1.15	69	3.4	9	4.3	13.5	6203	61
	8012	2900	1	0.75	2.8/1.6	80	3.9	8.5	4.6	15.5	6204	65
	6324	1440	1/4	0.18	1.1/0.6	69	4.0	6.5	5	8	6202	47
	7114	1435	1/3	0.25	1.15/0.63	70	2.3	6	3.1	9	6203	51
	7124	1430	1/2	0.37	1.5/0.9	75	2.5	6.0	3.1	10.8	6203	51
	8014	1450	3/4	0.55	2.15/1.25	80	3.8	8.5	4.5	17.5	6204	60
	8024	1440	1	0.75	3.0/1.7	80	3.2	7.5	4	20	6204	60
	7116	945	1/4	0.18	1.26/0.73	91	2.2	5	3.0	9.5	6203	49
	7126	945	1/3	0.25	1.5/0.87	88	2.2	5.5	3.1	10	6203	49
	8016	945	1/2	0.37	1.7/0.97	75	2.5	6	3.0	17.5	6204	52
	8026	945	3/4	0.55	2.35/1.36	93	2.7	6	3.0	20	6204	52
TEFC	8022	2910	1.5	1.1	3.6/2.1	50	3.1	8.0	4.0	17.5	6204	76
	90S2	2890	2	1.5	5.3/3.0	70	2.7	8.0	3.4	24	6205	79
	90L2	2885	3	2.2	7.3/4.2	76	3.1	8.5	3.8	30	6205	81
	100L2	2910	4	3	9.7/5.7	88	2.2	7.5	3.0	37	6206	82
	112M2	2900	5.5	4	12.3/7.1	85	2.1	8.2	2.9	45.5	6306	83
	132S12	2915	7.5	5.5	17.8/10.3	70	2.2	7.2	3.2	66	6308	86
	132S22	2910	10	7.5	23.2/13.4	70	2.5	8	3.5	79.5	6308	91
	90S4	1445	1.5	1.1	3.9/2.25	60	2.8	7.9	3.4	22	6205	66
	90L4	1440	2	1.5	5.9/3.4	77	3.1	8.0	3.6	27	6205	68
	100L14	1450	3	2.2	7.3/4.2	64	2.4	7.3	3.0	34	6206	71
	100L24	1440	4	3	9.5/5.5	71	2.7	7.5	3.2	42	6206	72
	112M4	1450	5.5	4	12.8/7.4	80	2.3	8	2.9	46.5	6306	73
	132S4	1460	7.5	5.5	17.2/9.9	78	2.7	8.5	3.5	78	6308	76
	132M4	1455	10	7.5	23.4/13.5	80	2.7	8.3	3.5	91	6308	81
	90S6	950	1	0.75	3.5/2.0	65	2.2	5.8	2.8	20	6205	65
	90L6	940	1.5	1.1	4.7/2.7	89	2.2	6	3.0	26	6205	66
	100L6	960	2	1.5	5.7/3.3	65	2.1	7	3.0	38	6206	68
	112M6	975	3	2.2	8.5/4.9	50	2.5	7.5	3.3	51	6306	71
132S6	975	4	3	11/6.4	80	2.4	7.8	3.2	80	6308	75	
132M16	975	5.5	4	14.5/8.5	80	2.3	7.6	3.2	93	6308	76	

All motors are 240/415V 50Hz

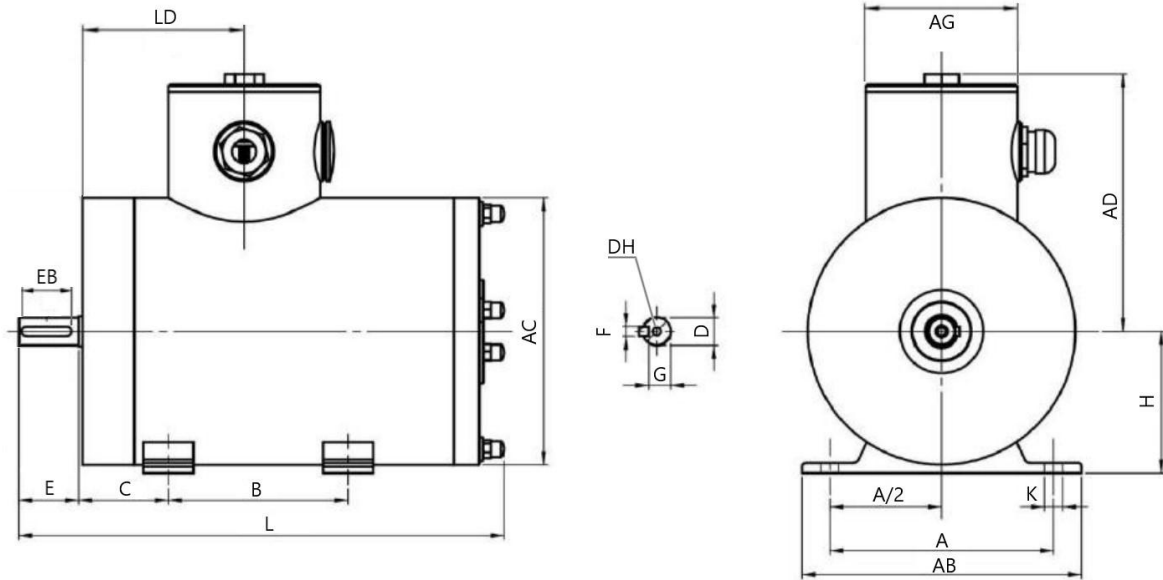
Every effort has been made to make sure data listed in this publication is correct and may change without prior notice.

Stallion Stainless Steel Electric Motors



"The Washdown Champion"

Frame size 56 to 90-B3 Foot mount-TENV



Frame Type	MOUNTING AND TOLERANCES												DIMENSIONS					
	A	A/2	B	C	D	E	EB	F	G	DH	H	K	AB	AC	AD	AG	LD	L (2 Pole/4 Pole)
56	90	45	88	36	9	20	14	3	7.2	M4X9	56	6	110	104	112	76	80	210/230
63	100	50	80	40	11	23	19	4	8.5	M4X9	63	7X10	125	114	117	76	82	211/236
71	112	56	90	45	14	30	30	5	11	M5X10	71	7X10	140	134	129	76	88	254/274
80M	125	62.5	100	50	19	40	34	6	15.5	M6X12	80	10X14	150	144	135	89	99	307/347
90S	140	70	100	56	24	50	40	8	20	M8X12	90	9	164	164	147	89	105	380
90L	140	70	125	56	24	50	40	8	20	M8X12	90	9	164	164	147	89	105	410

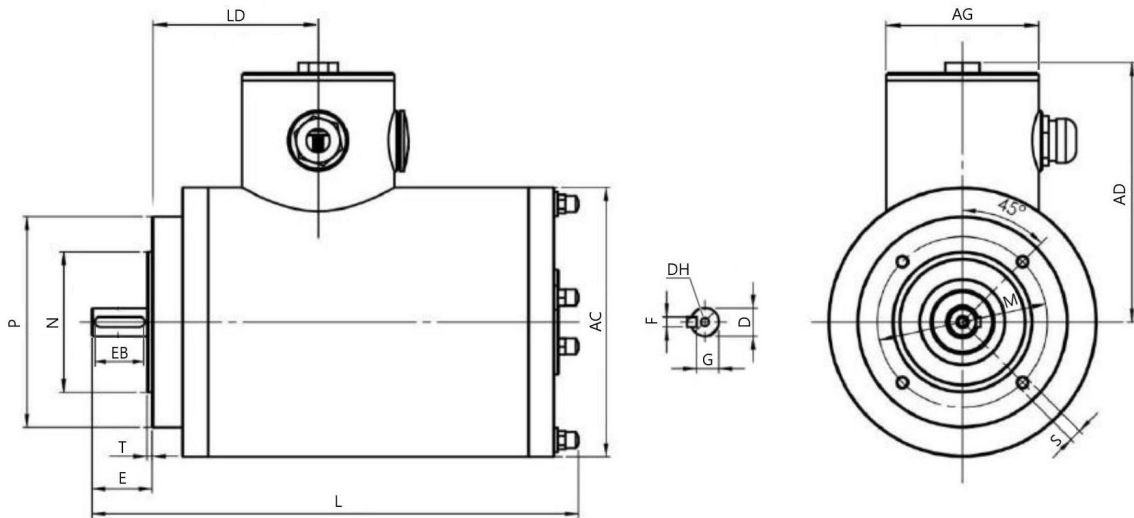
Every effort has been made to make sure data listed in this publication is correct. Any information may change without prior notice.

Stallion Stainless Steel Electric Motors



"The Washdown Champion"

Frame size 56 to 90-B14 Face mount-TENV



Frame Type	MOUNTING AND TOLERANCES										DIMENSIONS						
	D	E	EB	F	G	DH	M	N	P	S	T	AC	AD	AG	LD	L (2 Pole/4 Pole)	
56	9	20	14	3	7.2	M4X9	65	50	80	M5	4	2.5	104	112	76	80	210/230
63	11	23	19	4	8.5	M4X9	75	60	90	M5	4	2.5	114	117	76	82	211/236
71	14	30	30	5	11	M5X10	85	70	105	M6	4	2.5	134	129	76	88	254/274
80M	19	40	34	6	15.5	M6X12	100	80	120	M6	4	3	144	135	89	99	307/347
90S	24	50	40	8	20	M8X12	115	95	140	M8	4	3	164	147	89	105	380
90L	24	50	40	8	20	M8X12	115	95	140	M8	4	3	164	147	89	105	410

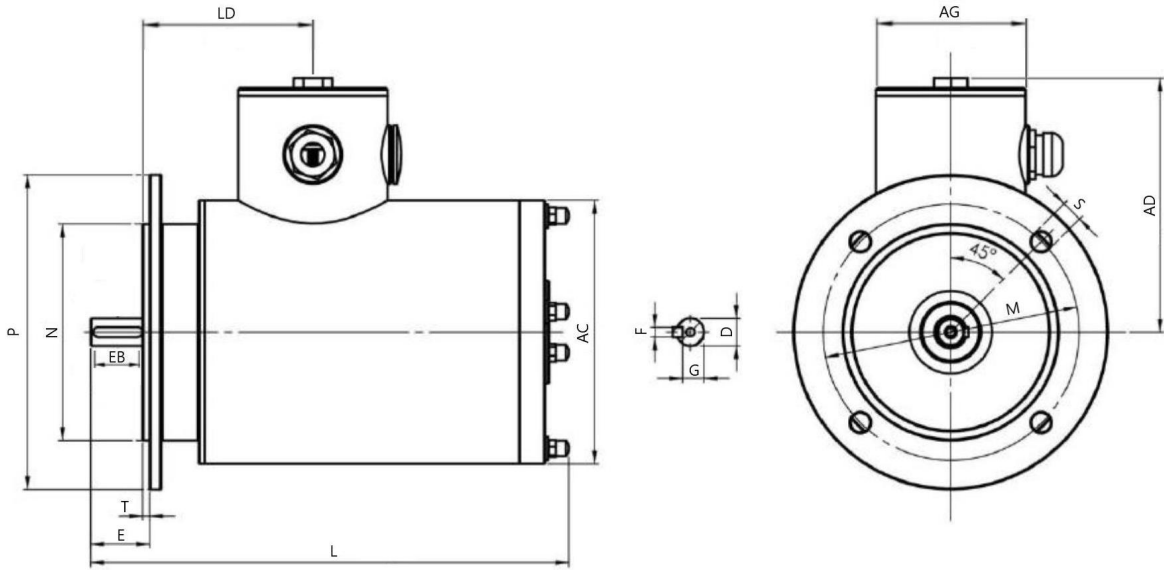
Every effort has been made to make sure data listed in this publication is correct. Any information may change without prior notice.

Stallion Stainless Steel Electric Motors



"The Washdown Champion"

Frame size 63 to 90-B5 Flange mount-TENV



Frame Type	MOUNTING AND TOLERANCES												DIMENSIONS				
	D	E	EB	F	G	DH	M	N	P	S	T	AC	AD	AG	LD	L (4 Pole/2 Pole)	
56	9	20	14	3	7.2	M4X9	85	70	80	M5	4	2.5	104	112	76	80	210/230
63	11	23	19	4	8.5	M4X9	100	80	90	M5	4	2.5	114	117	76	82	211/236
71	14	30	30	5	11	M5X10	115	95	105	M6	4	2.5	134	129	76	88	254/274
80M	19	40	34	6	15.5	M6X12	130	110	120	M6	4	3	144	135	89	99	307/347
90S	24	50	40	8	20	M8X12	130	110	140	M8	4	3	164	147	89	105	380
90L	24	50	40	8	20	M8X12	130	110	140	M8	4	3	164	147	89	105	410

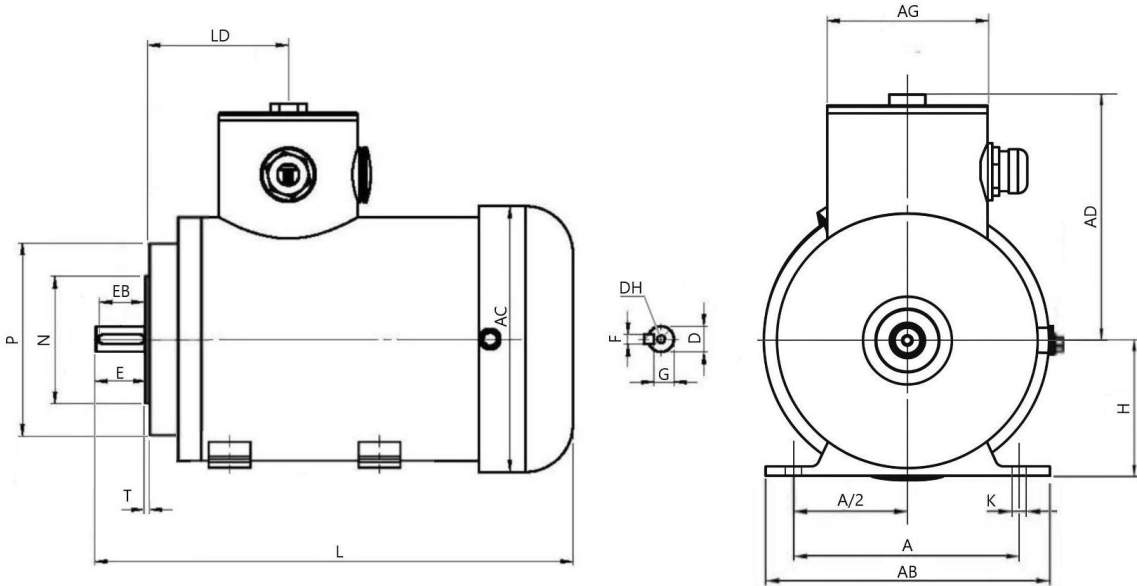
Every effort has been made to make sure data listed in this publication is correct. Any information may change without prior notice.

Stallion Stainless Steel Electric Motors



"The Washdown Champion"

Frame size 63 to 1-B3 Foot mount-TEFC



Frame Type	MOUNTING AND TOLERANCES												DIMENSIONS					
	A	A/2	B	C	D	E	EB	F	G	DH	H	K	AB	AD	AC	AG	LD	Lmax
63	100	50	80	40	11	23	19	4	8.5	M4X9	63	10	125	116	125	76	83	270
71	112	56	90	45	14	30	26	5	11	M5X10	71	10	140	129	146	76	88	280
80M	125	62.5	100	50	19	40	34	6	15.5	M6X12	80	10X14	150	135	156	89	99	365
90S	140	70	100	56	24	50	40	8	20	M8XX12	90	9	164	147	176	89	105	388
90L	140	70	125	56	24	50	40	8	20	M8X12	90	9	164	147	176	89	105	418
100L	160	80	140	63	28	60	50	8	24	M10X15	100	12X16	190	164	202	114	123	510
112M	190	95	140	70	28	60	50	8	24	M10X15	112	12X16	220	174	218	114	133	488
132S	216	108	140	89	38	80	70	10	33	M12X18	132	12X16	246	192	256	114	153	515
132M	216	108	178	89	38	80	70	10	33	M12X18	132	12X16	246	192	256	114	153	545
160M	254	127	210	108	42	110	95	12	37	M12X18	160	14.5X18.5	314	230	311	145	175	715
160L	254	127	254	108	42	110	95	12	37	M12X18	160	14.5X18.5	314	230	311	145	175	755

All Dimensions in millimeters

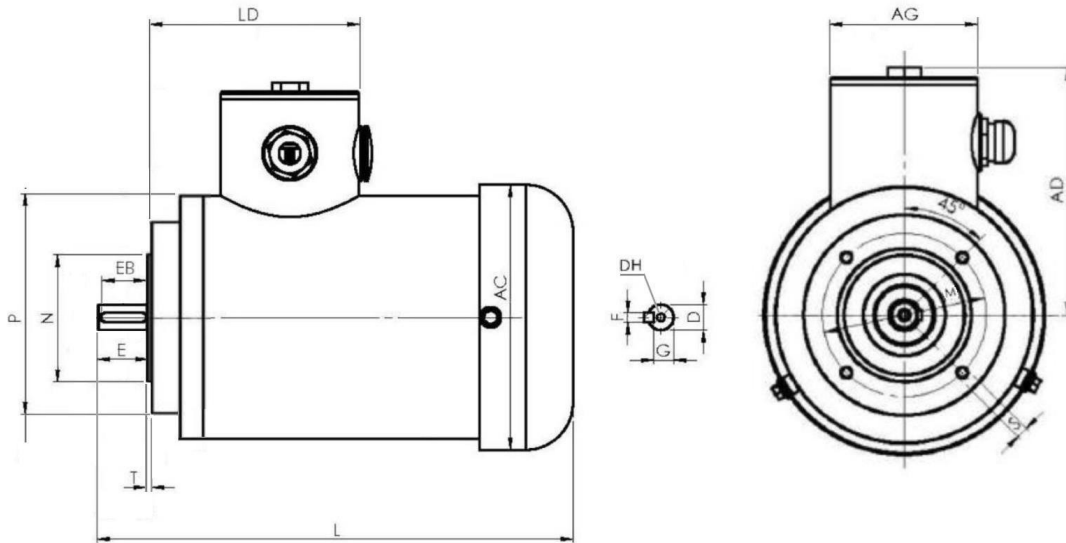
Every effort has been made to make sure data listed in this publication is correct. Any information may change without prior notice.

Stallion Stainless Steel Electric Motors



"The Washdown Champion"

Frame size 63 to 160-B14 Face mount-TEFC



Frame Type	MOUNTING AND TOLERANCES											DIMENSIONS					
	D	E	EB	F	G	DH	M	N	P	S	T	AD	AC	AG	LD	Lmax	
63	11	23	19	4	8.5	M4X9	75	60	90	M5	4	2.5	116	125	76	79	270
71	14	30	26	5	11	M5X10	85	70	105	M6X12	4	2.5	129	146	76	88	280
80M	19	40	34	6	15.5	M6X12	100	80	120	M6	4	3	135	156	89	99	365
90S	24	50	40	8	20	M8X12	115	95	140	M8	4	3	147	176	89	105	388
90L	24	50	40	8	20	M8X12	115	95	140	M8	4	3	147	176	89	105	418
100L	28	60	50	8	24	M10X12	130	110	160	M8	4	3.5	164	202	114	123	510
112M	28	60	50	8	24	M10X15	1030	110	160	M8	4	3.5	174	218	114	133	488
132S	38	80	70	10	33	M12X18	165	130	200	M10	4	3.5	192	256	114	153	515
132M	38	80	70	10	33	M12X18	165	130	200	M10	4	3.5	192	256	114	153	545
160M	42	110	95	12	37	M12X18	215	180	250	M12	4	4	230	311	145	175	715
160L	42	110	95	12	37	M12X18	215	180	250	M12	4	4	230	311	145	175	755

All Dimensions in millimeters

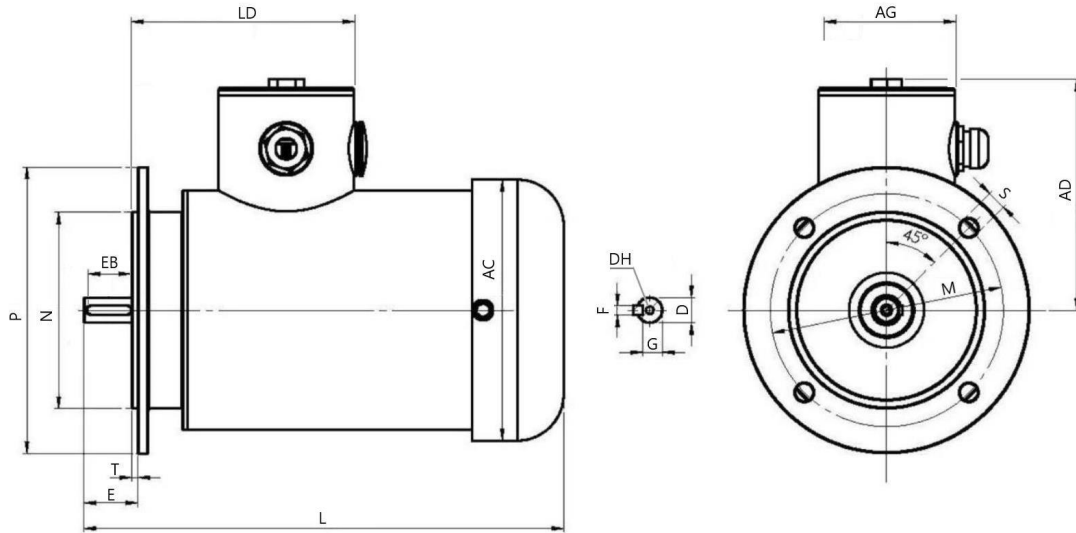
Every effort has been made to make sure data listed in this publication is correct. Any information may change without prior notice.

Stallion Stainless Steel Electric Motors



"The Washdown Champion"

Frame size 63 to 160-B5 Face mount-TEFC



Frame Type	MOUNTING AND TOLERANCES											DIMENSIONS					
	D	E	EB	F	G	DH	M	N	P	S	T	AD	AC	AG	LD	Lmax	
63	11	23	19	4	8.5	M4X9	115	95	140	10	4	3	116	125	76	79	270
71	14	30	26	5	11	M5X10	130	110	160	10	4	3.5	129	146	76	88	280
80M	19	40	34	6	15.5	M6X12	165	130	200	12	4	3.5	135	156	89	99	365
90S	24	50	40	8	20	M8X12	165	130	200	12	4	3.5	147	176	89	105	388
90L	24	50	40	8	20	M8X12	165	130	200	12	4	3.5	147	176	89	105	418
100L	28	60	50	8	24	M10X15	215	180	250	15	4	4	164	202	114	123	510
112M	28	60	50	8	24	M10X15	215	180	250	15	4	4	174	218	114	133	488
132S	38	80	70	10	33	M12X18	265	230	300	15	4	4	192	256	114	153	515
132M	38	80	70	10	33	M12X18	265	230	300	15	4	4	192	256	114	153	545
160M	42	110	95	12	37	M12X18	300	250	350	18.5	4	5	230	311	145	175	715
160L	42	110	95	12	37	M12X18	300	250	350	18.5	4	5	230	311	145	175	755

All Dimensions in millimeters

Every effort has been made to make sure data listed in this publication is correct. Any information may change without prior notice.



SAMT

HEAD OFFICE

TONSON Australia Pty Ltd

Unit 19/5 Lyn Parade

Prestons NSW 2170

Ph: (02) 9607 4100

Web: www.samt.com.au

Email: sales@samt.com.au